

# 4/97 Shirley Road, Wollstonecraft, NSW 2065

HOLMES|ST.CLAIR

## Sold Apartment

Saturday, 17 February 2024

4/97 Shirley Road, Wollstonecraft, NSW 2065

**Bedrooms: 1**

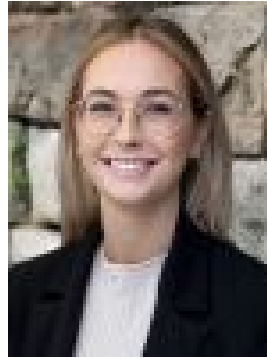
**Bathrooms: 1**

**Parkings: 1**

**Type: Apartment**



Robert Holmes  
0400323828



Emma Bell  
0434278272

## Contact agent

Nestled in nature yet ultra-convenient to the famous foodie hub of Crows Nest, this apartment will delight first home buyers, investors and active downsizers. It enjoys a unique lower-ground yet elevated position set back from the street and immersed in leafy surrounds. Natural light beams through three sides of the apartment while the generous living/dining room and balcony bask in northerly sunshine. Perfectly placed for a cosmopolitan lifestyle, stroll to all the shops, cafes and nightspots of Crows Nest within five minutes, as well as city buses and the upcoming Metro. It's also within a five-minute drive to parks, harbour foreshore reserves and New Year's Eve vantage points. The 15-minute CBD commute is a breeze.- Generous living/dining room with timber floorboards- Balcony with divine north aspect and leafy surrounds- Modern kitchen, sleek appliances with a dishwasher- Sizeable bedroom with built-in robe and leafy outlook- Neat bathroom, internal laundry, undercover parking- Stroll to Woolies, 'The Crowie' and international cuisine