

4 Boulton Cl, Bligh Park, NSW 2756



Sold House

Tuesday, 5 March 2024

4 Boulton Cl, Bligh Park, NSW 2756

Bedrooms: 5

Bathrooms: 3

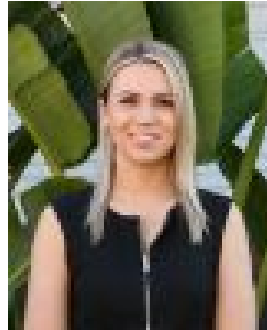
Parkings: 2

Area: 649 m²

Type: House



Cindy Cash
0245713000



Fallon Quigley
0452159080

\$1,150,000

Positioned on a quiet street, perfect for large or growing families is this dual level home with the added bonus of a one-bedroom granny flat. Set on 649.8sqm with a circular driveway and large backyard, the property also offers a double garage and ample off-street parking. Internally, the home has been partially renovated featuring a modern kitchen with stone benchtops, plantation shutters, tiles throughout the ground floor and generously proportioned bedrooms, master with ensuite and walk in wardrobe. The large alfresco area is perfect for entertaining and there is ample room in the backyard for a pool! The granny flat is the perfect place for in laws or older children with an open plan kitchen, meals and living room, large bedroom and ensuite bathroom. Located 4.1kms to Windsor Station, 5.6kms to Windsor Riverview Shopping Centre and 12kms to Sydney Business Park.

Main home

- Living room with two bay windows, adjoining dining room
- Open plan kitchen and family room with split system air conditioning
- Modern kitchen with 20mm stone benchtops, breakfast bar, dishwasher, electric cooktop and oven
- Renovation laundry with an additional toilet
- Master bedroom with a walk-in wardrobe and ensuite
- Three additional bedrooms all with built in wardrobes
- Family bathroom with a separate toilet
- Circular driveway with a double garage

Granny Flat

- Combined living and dining room
- Kitchen with electric cooking appliances
- Bedroom with a mirrored built in wardrobe
- Ensuite bathroom with a separate toilet

External

- Large undercover entertaining area with ceiling fans and LED lighting
- Paved courtyard
- Large grassed area, established gardens

All information about the property has been provided to Ray White by third parties. Ray White has not verified the information and does not warrant its accuracy or completeness. Parties should make and rely on their own enquiries in relation to the property.