

# 4 Connell Court, Willagee, WA 6156



## House For Rent

Saturday, 30 March 2024

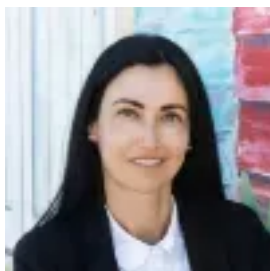
4 Connell Court, Willagee, WA 6156

**Bedrooms: 4**

**Bathrooms: 2**

**Parkings: 2**

**Type: House**



Ana Ramic  
0893361166

## APPLICATIONS UNDER REVIEW

Located in a quiet cul de sac, this reconfigured and renovated four bedroom, two bathroom weatherboard cottage has lots of character in a park-side pocket of Willagee just two minutes' drive to Willagee Shopping Centre. You are welcomed to the home by a white picket fence and a delightful front veranda lined with frangipanis that looks out over front garden. Inside the home features a striking open plan living area with high a high cathedral ceiling, solid timber floorboards and a unique loft space with a drop-down ladder. Ambient light from the high clerestory windows fills the space and a split system air conditioner will keep you cool in the warmer months. The living area incorporates a lounge, dining, study nook/ activities area and a bright, modern kitchen with crisp white cabinetry, an island bench, stainless steel appliances, and a dishwasher for easy meal preparation and clean up. The large main bedroom offers a private ensuite bathroom, there are three more well sized bedrooms set around a contemporary bathroom. At the rear of the home is a lovely north facing courtyard under a shade sail where you can enjoy some sun in winter. This unique home blends cottage character with modern efficiency and functionality. Connell Court is a quiet cul-de-sac that leads to Harmony Park, a lovely green space with kids play equipment. Located close to public transport links and the O'Connor retail precinct, in the catchment for Caralee Community School and Melville Senior High School. Features include:- Seeking initial 6 month lease- Option for 4 bedrooms or 3 bedrooms plus study- Solid timber floorboards- Unique loft with drop down ladder- Modern kitchen and bathrooms- Dishwasher- Wall mounted TV bracket in living area- Study nook/ activities area - Ducted reverse cycle air conditioning - Split system air conditioner in the living area- Reticulated gardens- Easy care courtyard- Garden shed- Off street parking for multiple vehicles- Quiet Cul de sac location close to parks and shops Please note: Pets will be considered case by case and on application. All images and information used to advertise this property are for marketing purposes only. Please enquire with our leasing team for more information on this beautiful home. Interested in this property? Click on 'Book Inspection' and choose a time that suits you. Register your details to be notified of upcoming inspections, time changes and cancellations. Please call our office on 9336 1166 if you have any queries. With such a high volume of applicants please refrain from sending in your application until after viewing the property. Tenants who have applied but not viewed the property unfortunately will not be considered, this ensures the property suits the needs of the successful applicant. Please be advised that we do not accept Ignite/1Form applications, please log on to <https://www.dethridgegroves.com.au/rent/properties-for-lease/> and click on the Apply Now button displayed on the property listed. Your enquiry is important to us and we will endeavour to show you through the property as soon as possible. Please be aware some properties have limited access.