

4 Ellis Drive, Mudgeeraba, Qld 4213



Sold House

Friday, 13 October 2023

4 Ellis Drive, Mudgeeraba, Qld 4213

Bedrooms: 4

Bathrooms: 2

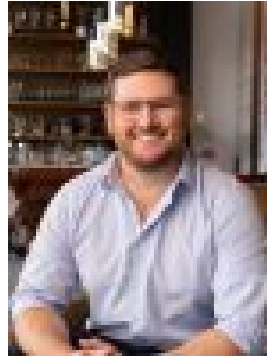
Parkings: 4

Area: 643 m2

Type: House



Charl Louw
0755788800



Rhys Burgess
0439156551

\$1,020,000

**** Inspections strictly by appointment and as arranged with the agent****Good size 4 bedroom home in Glenwood Park!Stepping inside, you'll find a warm and welcoming living area. The layout is open and accommodating, with the living room seamlessly connecting to the dining space and kitchen. While some updates may be necessary, the living areas provide a great canvas for personalization and design choices.The property features four generously sized bedrooms, providing ample room for a growing family or guests. Each bedroom offers the potential for personalized decor and design. The master bedroom includes an ensuite bathroom, providing a private retreat for the homeowners.Tenancy in place till early 2024Block size - 643 sqmTotal under roof area - 219 sqmOn Offer:4 Bedrooms with built-in wardrobes, the master with en-suit bathroom.Large family bathroom with bath tub and separate showerLarge kitchen with stone bench tops and plenty of cooking spaceSeparate laundry with outside accessDucted Air conditioningAutomated DLUGWhat makes Mudgeeraba so attractive:What makes this location so great is the close proximity to the parks, easy walking distance to the shops and village, but the best is the short hop and a skip to Mudgeeraba State school, less than 500m away.Easy access to the city, Larger homes becoming available in the suburb, Some of the best coffee shops on the GC, Reputation of primary schools, Increase in upper end property prices, Surrounded by natural bushlandSchoolsSome of the Gold Coast's best private schools are within 5km's away, Somerset College, Kings Christian College, All Saints and Hillcrest and many more. Mudgeeraba State School is within walking distance.Cafes, RestaurantsMudgeeraba has a unique setting with a well catered Village area that offers everything you could hope for without the hassle of going to a big shopping centre. Complimenting the shopping experience is weekly Markets that offer the best local produce of the community. Adding to this there is a monthly schedule with sporting events, open theatre nights, Friday night live bands and the best coffee shops on the coast!ShoppingMudgeeraba Shopping village including WoolworthsBell Place plaza including ColesAldi and any other public service also availableTransportBuses running to Nerang and Robina from the Mudgeeraba Village20 minutes from Gold Coast airport15 minutes drive from iconic Burleigh Beach8 Private and Public schools within 5kmRobina Town Centre less than 5 min drive50 Minutes to Brisbane international AirportEasy access to the Pacific Motorway and 5 minutes to Robina Train Station5 minutes to the home of the Titans at CBUS Stadium**Disclaimer of the advertisement:When preparing this information we have used our best endeavours to ensure the information contained herein is true and accurate, but we accept no responsibility and disclaim all liability in respect to any errors, omissions, inaccuracies or misstatements that may occur. Prospective purchasers should make their own enquiries to verify the information contained.