

4 Eminence Way, Wantirna South, Vic 3152



Sold House

Saturday, 23 September 2023

4 Eminence Way, Wantirna South, Vic 3152

Bedrooms: 4

Bathrooms: 2

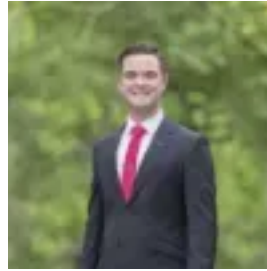
Parkings: 2

Area: 280 m2

Type: House



Kristy Djordevic
0398706211



Cory Phillips
0398706211

\$1,110,000

Settle into low maintenance modern living in the peaceful Harcrest Estate in this engaging five plus years approx contemporary home. Quality light filled spaces are delivered throughout, set in a keenly sought after suburban pocket surrounded by extensive parklands and family amenities. Drive into your double remote garage with direct internal entry into the bright interiors. Timber-look floors and fresh contemporary tones create a feeling of cohesion as you step through to a guest powder room and adjoining laundry with storage and external access. Opening to an expansive family living and dining area and separate study nook, perfect to keep an eye on the kids while you prepare dinner in the gourmet surrounds of your kitchen. Sleek subway tiles and a large walk-in pantry add to the sophistication of the space, supported by a stone island benchtop and full Westinghouse appliances incl 900mm oven with 5-burner gas cooktop plus a Smeg dishwasher. Effortlessly extending the indoor zone to undercover entertaining with outdoor lighting for all seasons fun. Surrounded by tranquil gardens to help you find your daily zen with a Japanese inspired bridge creating a beautiful segway over a water pond/feature to the freshly mulched garden with built-in children's play gym. Further living space features upstairs with a retreat and four bedrooms, 3 with WIRS, plus 2 spotless bathrooms incorporating a shower, bath with subway tile splashback and sep WC in the main. The master welcomes its own retreat/reading nook, double vanity ensuite and a walk-in-robe. Appointed with extras: ducted heating, split refrigerated heating/cooling in downstairs living and bedrooms, double linen press, Ring video intercom and 4 CCTV, large water tank and an extra car space on the driveway. Close to numerous wetlands, green space, bike/foot trails including R.D Egan Lee and Lakewood Nature Reserves, Norton Park for four-legged friends, and the Eastern Trail. Close to The Knox School, St Andrew's Christian College, Scoresby Secondary College, Wantirna Primary, Holy Trinity Primary and Swinburne TAFE, with the bonus of an estate bus servicing the private schools. Stroll to Harcrest Hub, minutes to Knox Ozone, Knox Private Hospital, buses, Eastlink, and an easy drive to the Kokoda Memorial Trail 1000 Steps.