

**4 Enid Place, Ingleburn, NSW, 2565**



**Sold House**

Friday, 7 July 2023

4 Enid Place, Ingleburn, NSW, 2565

**Bedrooms: 3**

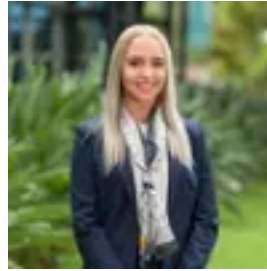
**Bathrooms: 2**

**Parkings: 2**

**Type: House**



Daniel Maurer



Hannah Portolesi

## Fully Renovated Family Home!

Welcome to 4 Enid Place, Ingleburn! This charming family home offers a comfortable and convenient living experience in a sought-after location. Situated in a peaceful cul-de-sac, this property provides a perfect blend of privacy and accessibility.

As you step inside, you'll be greeted by a spacious and light-filled interior. The open-plan living area seamlessly connects the living room, dining space, and kitchen, creating a versatile space for entertaining guests or relaxing with your loved ones. The contemporary design features neutral tones, high ceilings, and large windows that bathe the home in natural light, enhancing the sense of space and tranquillity.

### Features Include:

- \* Three great sized bedrooms with walk in wardrobes to two and a built in wardrobe to one
- \* Ensuite and walk in wardrobe to master bedroom
- \* Open plan living and dining
- \* Spacious modern kitchen with an island bench, gas cooking, drop pendant lighting, walk in pantry, breakfast bar, and Polyurethane cabinetry with soft close doors plus offering plenty of bench and cupboard space
- \* Main bathroom with bathtub and double vanity
- \* Wood floor boards throughout living areas
- \* Plantation shutters
- \* Downlights throughout
- \* Ducted air conditioning
- \* Internal laundry
- \* Security system/alarm
- \* Under-house storage
- \* Gas connections including hot water (continuous flow hot water system)
- \* Undercover decked patio perfect for entertaining
- \* Low maintenance grassed backyard
- \* Large grassed front yard
- \* Double lock up garage with external access
- \* Sitting on a good sized 564.3sqm block of land

### Location:

\* Approx 600m to Ingleburn RSL Club, 800m to Finch Park, 800m to Ingleburn High School, 1.0km to Sackville Street Public School, 1.6km to Holy Family Catholic Parish Primary School, 1.8km to Ingleburn Station, 1.9km to Ingleburn Village Shopping Centre.

Call today for further information!