

4 Family Place, Chirnside Park, Vic 3116

House For Sale

Friday, 17 May 2024



4 Family Place, Chirnside Park, Vic 3116

Bedrooms: 4

Bathrooms: 2

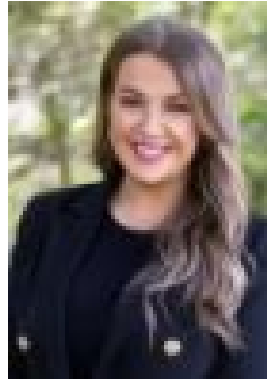
Parkings: 3

Area: 290 m2

Type: House



Damian Ford
0397355677



Megan Tiberi
0397355677

\$780,000 - \$840,000

Introducing an exceptional townhouse nestled in a prime Chirnside Park locale, showcasing flawless craftsmanship and contemporary allure. Situated discreetly at the rear, this expansive four-bedroom home epitomizes the perfect fusion of style and practicality. Upon arrival, a sense of sophistication greets you. The ground floor unveils a generously proportioned living space alongside a spacious kitchen featuring a walk-in pantry and adjoining dining area, seamlessly extending onto an open-air deck - an ideal setting for alfresco gatherings. Tucked conveniently off the kitchen is a large, well-appointed laundry with an additional toilet for utmost functionality. Rounding off the ground level is the spacious main bedroom, with a walk-in robe and ensuite and lots of natural light. Ascending to the upper level reveals three further bedrooms, a family bathroom, powder room, and a versatile study enclave, complemented by ample storage options throughout. Premium touches such as modern accents, stone bench tops, and soaring nine-foot ceilings exude sophistication, zoned refrigerated ducted heating and cooling ensure year-round comfort. Completing the picture is a double garage with internal access, side gate entry for trailer storage, a well-lit entertainer's deck, and an adjoining grassed area, all within the backdrop of a home that's barely four years young. Perfectly positioned, this remarkable residence is just moments away from Lilydale Train Station, with bus services conveniently passing by, as well as the vibrant amenities of Chirnside Park Shopping Centre, esteemed local schools, and recreational facilities. An inspection is sure to impress - seize this opportunity to experience the epitome of modern living.