

4 Gracehill Avenue, Burwood, Vic 3125

HEAVYSIDE

House For Sale

Friday, 24 May 2024

4 Gracehill Avenue, Burwood, Vic 3125

Bedrooms: 2

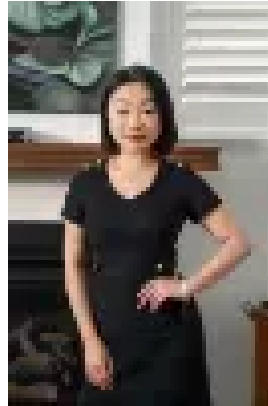
Bathrooms: 1

Parkings: 1

Type: House



Steven Zervas
0394703390



Kiana Jin
0394703390

\$680,000 - \$740,000

Watch the auction live here: <https://heavyside.co/live-auction/THE PROPERTY> A delightful hideaway in the highly sought-after Mount Waverley Secondary College zone, this superb two-bedroom villa unit offers an exceptional opportunity for a wide range of buyers to secure your future. Enjoying an elevated position with street frontage and a long private driveway, the home warmly welcomes you inside, with the formal living and dining zone upon entry complemented by stylish timber flooring and abundant natural light. Seamlessly adjoining the space, the newly renovated kitchen is certain to please all who love to cook, flaunting stone surfaces, breakfast bar, subway tile splashback and direct access to the private rear yard, complete with large, sun-splashed deck for entertaining, framed by lush lawns and gardens. Two generous bedrooms feature built-in robes and carpet underfoot, and share the luxe updated bathroom comprising walk-in shower, vanity and toilet. Further increasing the value and appeal, split system heating and cooling in the living zone and one bedroom, European laundry and a single carport with additional off-street parking.

THE FEATURES

- Delightful two-bedroom, one-bathroom brick veneer unit
- Elevated position with street frontage & private driveway
- Light-filled open plan living & dining zone upon entry
- Newly renovated kitchen with stone surfaces & breakfast bar
- Two plush bedrooms are complete with built-in robe storage
- Modern bathroom features walk-in shower, vanity & toilet
- Sun-splashed alfresco deck framed by lush lawns & gardens
- Single carport with ample additional off-street parking
- Split system heating & cooling for comfort in every season

THE LOCATION Wonderfully located for convenience, just a short stroll to local shops, parkland and trams, close to Burwood Brickworks, Deakin University and Gardiners Creek Trail, and within walking distance of an array of schools including St Scholastica's Primary, Mount Scopus Memorial College, Essex Heights Primary and Mount Waverley Secondary College (zoned).

THE TERMS:
30|45|60