

4 Hampton Court, Lansdowne, NSW 2430

Sold Residential Land

Friday, 29 March 2024



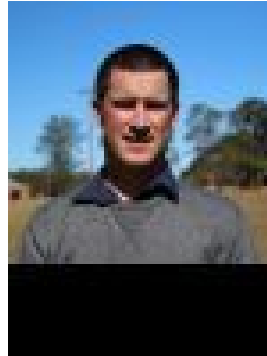
4 Hampton Court, Lansdowne, NSW 2430

Area: 754 m2

Type: Residential Land



Darrin Lewis
0409930420



Natt Lowman
0438443173

\$220,000

One of, if not the last residential building block in the Lansdowne Village. This level block is approximately 754 m. sq and has roughly 24 metres of street frontage. Three sides of the property are fenced in colorbond and services are not connected but available to do so. Found in an excellent position within walking distance to the general store, primary school and bowling club. Disclaimer: Information contained on any marketing material, website or other portal should not be relied upon. You should make your own enquiries and seek your own independent advice with respect to any property advertised or the information about the property.