

4 Harvey Way, South Ripley, Qld 4306



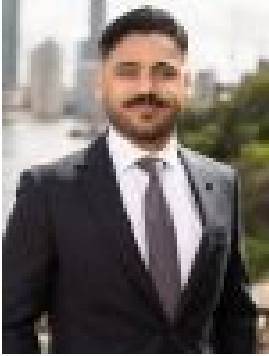
Sold Residential Land

Wednesday, 10 April 2024

4 Harvey Way, South Ripley, Qld 4306

Area: 433 m2

Type: Residential Land



Umair Khan
0400444786

\$365,000

Nestled in the sought-after Providence estate in South Ripley, This registered block of land presents an exceptional opportunity for those looking to build their dream home. This registered 433m² parcel boasts a generous 20m frontage and 14.58m from the rear, offering a canvas for creating a residence with a stunning facade. Key Features:

- Land Size: 433m²
- Registered
- Easements: N/A
- No bush fire buffer
- Based on available information, a Duplex can be built on this lot. Please verify setbacks for assurance.
- Positioned amidst a flourishing community, the property provides an excellent location to capitalize on the rapid growth of South Ripley. Surrounded by newly established schools, sports grounds, and public transport, it promises a vibrant lifestyle for families and investors alike.

Location Highlights:

- 15 minutes from Ipswich CBD
- 40 minutes from Brisbane CBD
- 5 minutes from Ripley Town Centre (Coles, BWS, Café, Bakery, and more)
- 15 minutes from RAAF Base Amberley
- 15 minutes from Springfield Central
- 5 minutes from Ripley Valley State School & Secondary College
- 10 minutes from Bremer State High School

Convenience extends to major amenities, including Ripley Valley State School, Ripley Valley State Secondary College, and the newly opened Ripley Central State School. For shopping and dining, enjoy the proximity to Ripley Town Centre and Yamanto Central Shopping Centre.

Why Consider This Property:

- Ideal for first-time buyers, young families, or investors
- Spacious block in a quiet, family-friendly estate
- Close to schools, shopping centers, and recreational facilities
- Easy access to Ipswich and Brisbane CBD

This land offers limitless possibilities, providing 433m² of space to design and construct a home tailored to your needs and lifestyle. Whether you're envisioning a spacious family residence or a savvy investment, this property is the perfect canvas for your dreams.

HOUSE&LAND FOR \$730,000
LAND: 433sqm BUILD: 200sqm

Your dream home is beckoning, whether you're a first-time buyer, investor, or seeking an upgrade. Picture a perfect place waiting for you. Choose your path - if you prefer finding your own builder, go ahead. However, if ease is what you desire, opt for our full turn-key house and land package. Move into your brand new home effortlessly. Crafted by seasoned builders with years of industry experience, our turn-key packages offer various inclusions. It's your choice to find your own builder or let us connect you with one of our trusted builders for a seamless experience.

- 4 bedrooms
- 2 Livings
- 2 bathrooms
- Double garage
- Stone benchtops in kitchen and bathrooms
- Stainless steel appliances
- Ducted air conditioning
- Lever mixer tapware
- LED downlights throughout
- Front door with feature sidelite
- Full fencing and landscaping package
- H1 slab allowance
- Flyscreen
- Clothesline
- Letterbox
- Choice of carpets, tiles, or timber-look vinyl flooring
- Ceiling height of 2590mm
- Fixed-price cost for price certainty

Opt for our full turn-key house and land package, and effortlessly move into your new home hassle-free! Seize the opportunity to secure a block of land or House& Land in one of Queensland's fastest-growing suburbs. For more information on this property, contact Umair Khan @ 0400 444 786.

Disclaimer: Ray White has taken all reasonable steps to ensure the accuracy of the information in this advertisement but accepts no responsibility for errors, omissions, inaccuracies, or misstatements. Prospective purchasers are encouraged to conduct their own inquiries to verify the information provided in this advertisement