

4 Helix Close, Clifton Beach, Qld 4879



House For Sale

Thursday, 4 April 2024

4 Helix Close, Clifton Beach, Qld 4879

Bedrooms: 4

Bathrooms: 2

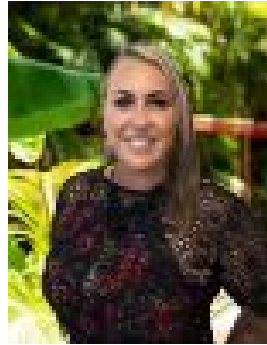
Parkings: 2

Area: 600 m2

Type: House



Matthew Pearce



Nicole Barry

0418763311

Contact Agents

Your new coastal oasis awaits in Delany's Creek Estate. This home offers the epitome of relaxed beachside living. With a spacious open plan design, this property is perfect for those who love to entertain and relax in this quiet and sought-after location. Step inside and be greeted by the bright and airy living area, seamlessly flowing into the dining and kitchen spaces. The well-appointed kitchen features modern appliances and ample storage, making it a joy to cook and entertain in. One of the many standout features of this property is the gated covered side access, providing plenty of space to securely park your vehicles or boat. Imagine hosting family and friends in the expansive outdoor entertaining area, complete with a rainforest backdrop. With solar panels installed, you'll enjoy the benefits of reduced energy costs while being environmentally conscious. Take a short stroll to the beach and bask in the sun, or enjoy a leisurely walk on the nearby boardwalk to Palm Cove. Don't miss out on this fantastic opportunity to own your piece of paradise. Contact us today to arrange a private viewing of 4 Helix Close, Clifton Beach. Experience the coastal lifestyle you've always dreamed of. Matthew Pearce 0418 708 758 or Nicole Barry 0418 763 311