

4 Jennifer Close, Epsom, Vic 3551

Sold House

Thursday, 9 November 2023

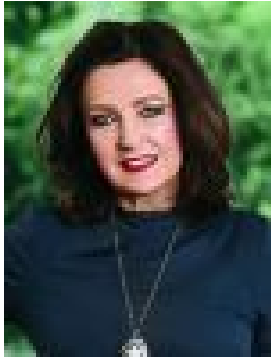
4 Jennifer Close, Epsom, Vic 3551

Bedrooms: 3

Bathrooms: 2

Parkings: 2

Type: House



Jen Wallace
0407867839

\$570,000

Set on a fabulous landscaped block this appealing brick home enjoys quiet family living in a desirable court in Epsom. Charm emanates from a light airy interior with a generous lounge equipped with a split system A/C. The main hall flows to a light airy kitchen with lovely white cabinetry and includes a dishwasher, gas cooktop and wall oven. This area also includes an additional split system A/C. There are 3 carpeted bedrooms all with large BIRs. The master includes a WIR robe and private ensuite with dual basins. A bonus of the property includes gas ducted heating and ceiling fans in each room. Adjoining the kitchen is a lovely covered alfresco area overlooking a calm and welcoming garden. There is a custom built 10m x 4m pergola for a private low maintenance retreat. Rear entry to the home is via a double remoted controlled garage. The home is a 'McCarthy' built home and also boasts a 6-star energy rating. A short drive to the stunning White Hills Botanical Gardens, 5 minutes drive to Epsom Village and Epsom Railway station and close proximity to the White Hills Bakery, Pharmacy and Medical Centres with Bendigo Health just 6 minutes drive as well. Nearby schools include White Hills PS, Epsom PS, Weeroona Secondary College. Another attraction is the location of the property where there is an abundance of lovely bush walking tracks nearby. Only a 13 minute drive to the Bendigo CBD, this charmer is too good to miss.