

4 Kestrel Close, Chelsea Heights, Vic 3196



Sold House

Friday, 11 August 2023

4 Kestrel Close, Chelsea Heights, Vic 3196

Bedrooms: 3

Bathrooms: 2

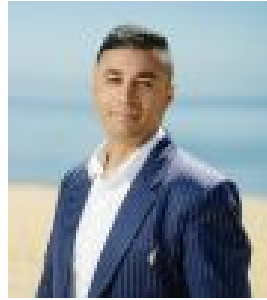
Parkings: 1

Area: 336 m2

Type: House



Jo Barclay
0439394434



Dee Kohli
0417952843

\$780,000

Boasting a coveted no through road position, this impeccable 3 bedroom, 2 bathroom family home will instantly impress with its inviting warmth, light-filled spaces and classic style. With the unspoilt natural beauty of the Edithvale Wetlands steps away and glorious beaches within moments - this solidly built residence will be sure to tempt first homebuyers, downsizers and investors. Spanning a spacious single level, discover a bright and airy interior that features a relaxed lounge room, flowing through to an immaculate kitchen and meals area, with sliding doors seamlessly connecting the space to a large covered entertaining patio, where you'll love to host family and friends year-round. Accommodation is plentiful with three bedrooms and two bathrooms, the main bedroom enjoying robes and an ensuite, while two additional robed bedrooms share an impeccable family spa bathroom and separate w/c. Further enhanced by ducted heating, split system a/c and ceiling fans, a tool shed, carport and gorgeous fuss free gardens, you'll also appreciate the huge multipurpose garage - perfect for use as a mancave, home gym, teen retreat or work from home space. Located in a much-loved parklands pocket, delight in the easy access to excellent local schools, public transport, shopping and the Mordialloc Bypass, plus 5-minutes will have you at Edithvale Train Station, or soaking up the lifestyle on one of the best beaches along the bay!