

# 4 Lillian Crescent, Schofields, NSW 2762

## House For Sale

Friday, 8 March 2024

4 Lillian Crescent, Schofields, NSW 2762

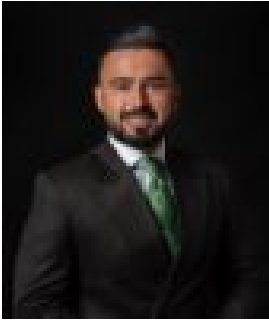
Bedrooms: 5

Bathrooms: 3

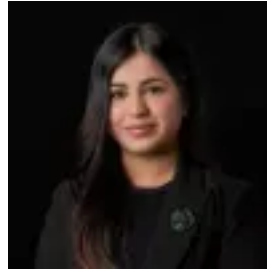
Parkings: 2

Area: 353 m2

Type: House



Amit Kumar  
0288964336



Siya Sachdeva  
0288964336

## Price Guide: \$1,165,000

Positioned in one of the most desirable locations, a home designed to showcase maximum use of space for the family and presents great value in this market showcasing exceptional high-quality living, with exquisite space, tastefully designed interiors, and something for everyone in the family, offering a warm and comfortable lifestyle in the sought-after neighbourhood of Schofields. This home is sun-drenched throughout the day and presents a perfect blend of indoor and outdoor entertaining areas. Upon entering the home, you are first greeted by the formal front lounge room, which flows onto the open-plan kitchen, dining and living areas. Not to mention the media room, provides a multi-zone living experience. The outdoor undercover alfresco and backyard are both spacious and private, a perfect place to host and accommodate your loved ones. The modern kitchen is well equipped and features quality stainless steel appliances, stone benchtops, a freestanding five burner gas cooktop and 900mm oven, a waterfall island benchtop with an eat-in breakfast bar, a walk-in pantry as well as plenty of storage space. Accommodation consists of four well-sized bedrooms, three of which with built-in robes. The media room downstairs can also be altered into a fifth bedroom, providing endless possibilities for multigenerational families, a guest bedroom, a home office or a kid's playroom. The master retreat showcases a large walk-in wardrobe and a private ensuite bathroom. Features you are sure to love:- 5.2 KW Solar system & 6.4KW battery- Fully automated drip irrigation system for both front and back yard- CCTV 2K Cameras- Epoxy flooring in the garage- LED lights throughout - Ducted air conditioning - Floorboards throughout the home- Media/potential fifth bedroom downstairs- Rumpus room upstairs- Three full modern bathrooms- Alfresco with decking and low-maintenance backyard- Remote-controlled, double lock-up garage with internal access- Land Size 353 sqm approx. Location Highlights:- 5 minutes drive to Schofields Train Station and Schofields Shopping Village- 5 Minutes drive to Tallawong Metro Station- Walking distance to the Premium Galungara Public School - 9 minutes drive to Rouse Hill Town Centre- Minutes walk to local parks - Within short distance to Childcare Centres and Medical Centres Disclaimer: All information contained herein is obtained from property owners or third-party sources which we believe are reliable. We have no reason to doubt its accuracy, however, we cannot guarantee it. All interested person/s should rely on their enquiries.