

4 Lindner Avenue, Ashton, SA 5137

HARRIS

Sold House

Thursday, 19 October 2023

4 Lindner Avenue, Ashton, SA 5137

Bedrooms: 3

Bathrooms: 2

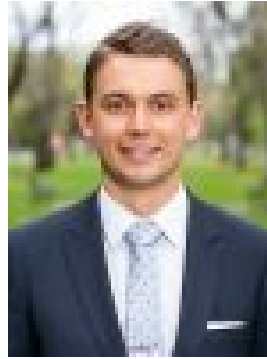
Parkings: 1

Area: 1 m2

Type: House



Josh Biggs
0407604041



Jack Hodgson
0423029621

Contact agent

An escape to the rolling hills of Italy, no more than half an hour from the Adelaide CBD – 4 Lindner Avenue is ready to be your Tuscan escape, no passport required. A classic family home, updated with care and consideration, sitting pretty on a nearly 4-acres of bliss - it's the good life, guaranteed. Vine-wrapped red brick archways front the c1960 home, wrapping the generous footprint in rich street appeal. An expansive dining area is complete with roaring combustion heater for toasty winters, with connection to additional lounge ensuring plenty of room to spread out. Certain to be the heart of your home, a central kitchen combines expansive cupboard space, stainless steel appliances and luxe grey-toned tiling to create a designer hub ready for everything from quiet brunches to gourmet cook-ups. Three spacious bedrooms are placed across the floorplan for maximum privacy, with main complete with walk-in robe and luxe updated ensuite, floor-to-ceiling tiles, wide vanity and frameless glass screen shower combining to a calm retreat for self-care rituals. An additional updated family bathroom offers terrazzo-look tiling and bathtub, expertly integrated with an extensive laundry for further liveability and utility. Providing a plethora of scope to roam in your own backyard, a canopy of soaring treetops, rear veranda, established gardens, raised veggie patch, and firepit area are surrounded by open fields and vineyards, finishing your new empire with pure serenity. Perfectly triangulated between Ashton, Norton Summit and Marble Hill, placing all the idyllic lifestyle of the eastern hills at your doorstep. The booming Scenic Hotel is nearby for a pub meal or quick drink with the locals, with an abundance of wineries your new neighbours for down time spent exploring cellar doors and trying new vintages. Norton Summit Primary School is just a short drive away, with zoning for the newly refurbished Norwood International High School and an abundance of private schooling choices just down the hill for a simple school run. It all adds up to something truly magic. La dolce vita awaits. More to love: • Combustion heater to lounge • Double carport and additional off-street parking • Irrigation system • Sheds Specifications: CT / 5815/741 Council / Adelaide Hills Zoning / PRuL Built / 1960 Land / 3.88A Estimated rental assessment / \$500 - \$550 per week / Written rental assessment can be provided upon request Nearby Schools / Norton Summit P.S, Basket Range P.S, Uraidla P.S, Crafers P.S, Norwood International H.S. Disclaimer: All information provided has been obtained from sources we believe to be accurate, however, we cannot guarantee the information is accurate and we accept no liability for any errors or omissions (including but not limited to a property's land size, floor plans and size, building age and condition). Interested parties should make their own enquiries and obtain their own legal and financial advice. Should this property be scheduled for auction, the Vendor's Statement may be inspected at any Harris Real Estate office for 3 consecutive business days immediately preceding the auction and at the auction for 30 minutes before it starts. RLA | 226409