

4 Lydiate Road, Noarlunga Downs, SA, 5168

Sold House

Tuesday, 18 April 2023



4 Lydiate Road, Noarlunga Downs, SA, 5168

Bedrooms: 3

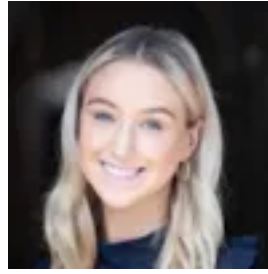
Bathrooms: 1

Parkings: 1

Type: House



Jackie Bayly
0870718000



Casey Grigg

Everlasting views at your doorstep!

Welcome to your new family home generously situated on 683sqm of land.

Perfectly situated amongst other well cared for homes in this quiet street.

This home has had recent renovations, it is simple and low maintenance and ready for you to move right in and enjoy.

The master bedroom has a stunning brick feature wall that makes it warm and cozy. This leads out to the balcony where you will spend most nights watching the sunset over the gorgeous views.

You will appreciate the spacious bedrooms, all with carpet and built in robes for great storage.

Perfect for those first home buyers starting out, maybe it's to downsize or to add to your investment portfolio or simply to appreciate the wonderful community and gorgeous views this home has to offer.

The kitchen includes a filtered water tap, 900mm cooktop and range hood and stunning outlooks into the garden.

Feel at ease as you step outside into your own private undercover area. This is the perfect place to entertain your guests and enjoy a BBQ on a warm summer day, then head down to the beach to cool off.

With the opportunity to make it your own, you don't want to miss this. A place to call home and create memories with your friends and family.

An easy commute via the Southern Expressway straight to the Adelaide CBD, a short drive to the most gorgeous beaches in SA and moments from the Gawley Park, A.S Perry Reserve and the Hartley Reserve.

With the Colonnades Shopping Mall up the road and the Onkaparinga River National Park close by, it couldn't get much better than this in terms of location.

More you'll love about this home:

- New timber laminate
- Freshly painted throughout
- New blinds installed
- Abundance of natural light
- Stunning views
- Balcony off the master bedroom
- All bedrooms with built in robes
- Two sheds

Zoned schools: Noarlunga Downs Preschool, Christies Beach HS & Southern Vocational College. Nearby primary school: Noarlunga Downs Primary School.

Specifications

CT | 5293/982

Council | Onkaparinga

Built | 1988

Land | 683sqm

Council Rates | \$351pq

SA Water | \$351.08pq

ESL | \$100.60pa

Easement | Yes

Encumbrance | No

Disclaimer: All information provided has been obtained from sources we believe to be accurate and is provided as a guide only. We cannot guarantee the information is accurate and the Agent, Vendor and supplier accept no liability for any errors or omissions (including but not limited to a property's land size, floor plans and size, building age and condition). Interested parties should make their own enquiries and obtain their own legal advice. Should this property be scheduled for auction, the Vendor's Statement may be inspected at 60 North Terrace Kent Town for 3 consecutive business days immediately preceding the auction and at the auction for 30 minutes before it starts. RLA 266410