

4 Masaryk Court, Vermont, Vic 3133



House For Sale

Monday, 20 May 2024

4 Masaryk Court, Vermont, Vic 3133

Bedrooms: 4

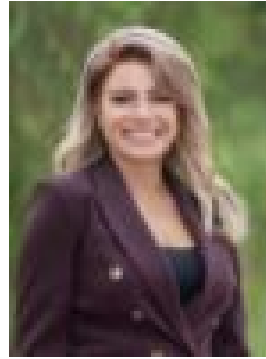
Bathrooms: 2

Parkings: 2

Type: House



Stephen Le Get
0438558870



Christine Bafas
0427835610

\$1,150,000 - \$1,250,000

Enjoying a tranquil court setting in a truly exceptional location for growing families, this renovated single level home is peacefully set amidst beautifully tended gardens and manicured lawns. Boasting two separate living areas, an ensuite master bedroom and a well-equipped kitchen, the home also features a private rear deck ideal for outdoor family living. Superbly positioned just a stroll from leafy Stephens Reserve playground and sports facilities, buses, St Timothy's Primary School and Brentford Square shopping, the home is also within easy walking distance of Bellbird Dell Reserve bushland. Set comfortably within the prized Vermont Secondary College zone, the location is also moments from Emmaus College, Forest Hill Chase, quality kindergartens, Aqualink, and EastLink for seamless city and peninsula access. At the entry, a sun-drenched living and dining room offers a delightful north-facing aspect, overlooking meticulously landscaped gardens. A separate family room offers a thoughtfully zoned layout for growing children, providing flexibility throughout the years. A newly installed Eco deck with shade sail is ideal for relaxed outdoor dining, and leads to an inviting verdant garden with lemon, lime, nectarine, blood plum and olive trees, two large vegetable beds, and a magnificent mature scented magnolia. The renovated contemporary kitchen comprises a casual meals area, ample quality soft-close cabinetry with a walk-in pantry and concealed appliance cabinet, coloured glass splashbacks, a magnetic knife strip, and a full suite of pristine appliances including an Asko dishwasher, an Electrolux gas cooktop, one and a half Electrolux electric ovens, and an Insinkerator boiling water tap. Four large bedrooms are each equipped with built-in wardrobes, including a master with an immaculate contemporary ensuite featuring floor-to-ceiling tiling, a semi-frameless glass waterfall shower, and a heated towel rail. The stylish renovated central bathroom offers a semi-frameless glass waterfall shower, heat lamps and a deep separate bathtub, and is complemented by a full laundry with direct outdoor access. Featuring ducted refrigerated air conditioning and heating, an additional Solarmate passive heating and cooling system, ceiling fans, a 6.6kW solar system with a battery compatible hybrid inverter, in-roof insulation, floating bamboo sound reduction floorboards, vinyl plank timber-finish flooring in the kitchen, gas hot water, ethernet outlets in all rooms, dimmer lights in both living areas, roller blinds with privacy sheers, updated aluminium window frames, double glazed windows on the south side, external security cameras, an extra high Colourbond rear fence, and two substantial sheds, the home also includes a remote lock-up enclosed double carport with shelves, plus space to park an additional car.