

4 Norwich Drive, Berwick, Vic 3806



House For Sale

Tuesday, 28 May 2024

4 Norwich Drive, Berwick, Vic 3806

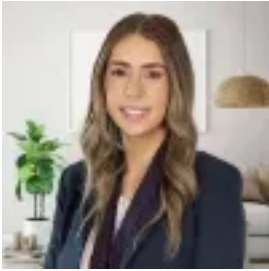
Bedrooms: 4

Bathrooms: 2

Parkings: 2

Area: 608 m2

Type: House



Jess Hall

0397071400

\$980,000 - \$1,070,000

Welcome to 4 Norwich Drive, Berwick, a stunning 4-bedroom home nestled in the serene and sought-after Chase Estate. This beautiful residence offers a perfect blend of modern amenities and comfortable living, situated on a quiet street that promises peace and privacy. As you step inside, you'll be greeted by the thoughtful layout that places three spacious bedrooms and a family bathroom with a separate toilet at the front of the home. Each bedroom offers ample storage, ensuring a clutter-free living environment. The heart of the home features a contemporary kitchen equipped with high-quality 900mm appliances, a large walk-in pantry, and an elegant waterfall benchtop. This modern kitchen seamlessly overlooks the cozy living area, complete with a fireplace, and the adjacent dining room, making it an ideal space for both everyday family life and entertaining guests. A rumpus room at the rear provides additional space for recreation and relaxation, while a convenient study nook offers a quiet area for work or study. The master bedroom is a true retreat, boasting both a built-in robe and a walk-in robe, along with a luxurious ensuite for added privacy and comfort. Step outside to discover the delightful alfresco area, featuring timber decking that creates a perfect setting for outdoor dining and entertaining. This outdoor space extends your living area and offers a great place to relax and enjoy the tranquil surroundings. This home is perfectly positioned for family living, with a range of local amenities at your fingertips. You'll find numerous parks, sporting grounds, and walking tracks nearby, providing endless opportunities for outdoor activities. Families will appreciate the proximity to quality schools and the easy access to the freeway for convenient commuting. Additionally, the Eden Rise shopping centre is within walking distance, ensuring all your shopping needs are met with ease. Additional features of this remarkable home include gas ducted heating and evaporative cooling for year-round comfort, and stylish plantation shutters that add a touch of elegance to the interior décor. Don't miss the opportunity to make 4 Norwich Drive, Berwick, your new home. Experience the perfect blend of modern living and serene surroundings in this beautiful Chase Estate residence.