

4 Rainbow Court, Gowrie Junction, Qld 4352



House For Sale

Thursday, 23 November 2023

4 Rainbow Court, Gowrie Junction, Qld 4352

Bedrooms: 4

Bathrooms: 3

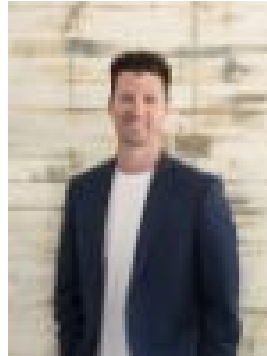
Parkings: 4

Area: 2120 m2

Type: House



Cooper Watson
0497170749



Elliot Scholefield
0415458874

Offers Over \$879,000

Serenely situated in a desirable tree-lined location and set behind a Jacaranda tree lined driveway - this picture-perfect modern Queenslander showcases contemporary beauty through its interior which will captivate with its generously proportioned light-filled dimensions, stunning fit-out, and outstanding alfresco entertaining on the oversized timber deck offering picturesque vistas. Set on half an acre, with a very wide street frontage, the contemporary interior over two levels features polished timber floors, wainscoting, high ceilings and picture windows framing the breathtaking, country views. The two-level layout is designed for effortless family relaxation and entertaining with a sleek kitchen that links to both indoor and outdoor dining zones. Equipped with quality appliances and gas cooktop, the stunning stone kitchen has plenty of storage and food prep space. The high ceilings accentuate the sense of space in the spectacular living and dining rooms both bathed in natural light and warmed in winter by a wood fire heater. The fabulously zoned interior layout incorporates three spacious bedroom suites on the upper level with the fourth bedroom located on the ground level. The master bedroom is generous in size, while its ensuite has a large walk-in shower and walk-in robe. To complement the remaining bedrooms the sleek family bathroom featuring mosaic floor tiles and floor to ceiling wall tiling offers a stunning standalone bath, independent shower, and gorgeous black tapware. A study/home office, along with the fourth bedroom, shower, kitchenette, and meals area complete the ground level layout. Step outside and you are sure to be delighted by the expansive timber deck, a superb place to entertain. In addition to all the outstanding features of the home, the property also features workshop/under house storage 8.9 x 6.5m, multiple carports plus a 15 x 9.5m shed. You will find this home ticks all the boxes for the needs of a modern family lifestyle. Overall features of this property include:-

- Expansive open plan kitchen, living, dining-
- Modern kitchen complete with quality cooking appliances, an abundance of storage throughout-
- Study/home office-
- The remaining bedrooms feature built in robes and ceiling fans-
- Master bedroom complete with ensuite and walk-in robe-
- Main bathroom complete with a separate shower, free standing bath and -
- Alfresco timber deck 7.1 x 7.2m-
- Huge 15 x 9.5 m separate shed-
- Complete with side access

RealWay Property Partners is proud to present 4 Rainbow Court, Gowrie Junction to the market. For more information, call the team on 0415 458 874 today.