

**4 Swagman Court, Whyalla Jenkins, SA 5609**



**House For Sale**

Wednesday, 29 May 2024

4 Swagman Court, Whyalla Jenkins, SA 5609

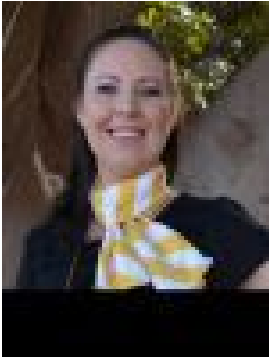
**Bedrooms: 5**

**Bathrooms: 2**

**Parkings: 6**

**Area: 4211 m2**

**Type: House**



Leah Kirk

## Price By Negotiation

Discover a delightful haven where this family-friendly designer brilliance offers you a unique opportunity to fulfil the big block dream for a joyful living experience. This tastefully 2008 build by Hickinbotham showcases an elite level of style and class boasting 5 bedrooms, 2 bathrooms, a study, open plan living, a formal living room plus a family room. This home is sure to impress with the great size shed, ducted reverse cycle air conditioning, solar panels plus a ducted vacuum system. Peacefully located in a quiet cul-de-sac, this large family home is set on an impressive size allotment of approximately 4,211m<sup>2</sup>. Arriving at the home and passing through the double front gates welcomes you with neatly presented gardens and ample open car parking spaces plus a double garage with a panel lift door. Step into a world where elegance meets comfort and embodies a homely atmosphere to the tiled entryway finished with downlights. Moving towards the double doors to your left welcomes you to the first living room featuring carpeted flooring, curtains fitted to the double windows and downlight. Moving across the hallway places bedroom 5 complete with carpeted floor, curtains fitted to the double windows, downlights and floor to ceiling built in robe for all your storage needs. Continuing down the hallway invites you to the grand size open plan kitchen, living and dining room which continues the tiled flooring, downlights and double glass sliding doors with rear yard views. The well designed kitchen showcases Tasmanian Blackwood timber cabinetry offering you plenty of storage and bench space, a walk-in pantry, a double sink plus quality stainless steel appliances consisting of a dishwasher, a 6 burner gas cooktop and oven plus a rangehood. Flowing off the open plan space leads you to double doors opening up to a brilliant area of the home for the whole family to enjoy with the spacious family room featuring tiled flooring, downlights, a ceiling fan, blinds and a glass sliding door with views of the outdoor alfresco. Following to the home's second hallway places 4 bedrooms designed for your comfort with bedrooms 2-4 located at the rear of the home and are all complete with carpeted flooring, curtains plus floor to ceiling mirrored built-in robes. Moving up the hallway and to your left greets you with the perfect study room featuring carpeted flooring, downlights and entry access from hallway 1 and 2. Also flowing off the bedroom hallway you are met with the main bathroom set in sophisticated design featuring a washroom complete with a wall-to-wall vanity and a separate toilet plus a bathroom featuring a walk-in shower and a relaxing deep bath. Continuing up the hallway to the front of the home places the master bedroom complete with carpeted flooring, double windows fitted with curtains, downlights and a ceiling fan for the warmer months. The master bedroom also continues to your own walk-in robe impressive in size and leads you to your own tiled ensuite featuring a walk-in shower, corner vanity, a toilet plus a corner spa to wind down and relax. Moving back through the home to the open plan glass sliding doors opens up to an entertainer's dream with an inviting outdoor alfresco area finished with downlights - A lovely area of the home to either sit down and relax or entertain your family and friends. From the alfresco places a large verandah wrapping around part of the home which drops off to green lush lawn for the pets and kids to enjoy. From here opens up to a great size rear yard featuring a natural outlook and offers endless opportunities for you to create as your own. This rear yard also includes an impressive size shed complete with concrete flooring, power, lights and double roller doors for access - Perfect as a workshop or for all your storage needs. Live the lifestyle you've always dreamed - This breathtaking designed home is bursting with wonderful versatile living with many quality and desirable features offering lovers of large allotments the unique opportunity to immerse yourself in style and comfort. Don't wait, come and see for yourself and start your next chapter. Council Rates: Approximately \$3,073.28 per annum Rental Appraisal: Available Upon Request Disclaimer: We have obtained all information in this document from sources we believe to be reliable; However we cannot guarantee its accuracy and no warranty or representative is given or made as to the correctness of information supplied and neither the owners nor their agent can accept responsibility for error or omissions. Prospective purchasers are advised to carry out their own investigations. All inclusions and exclusions must be confirmed in the Contract of Sale.