

4 Sylan Street, Marsden Park, NSW 2765

Sold House

Friday, 18 August 2023

4 Sylan Street, Marsden Park, NSW 2765

Bedrooms: 3

Bathrooms: 2

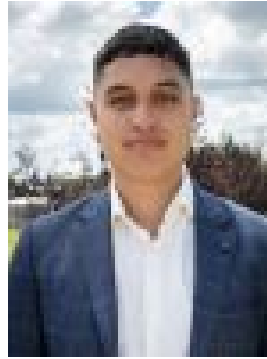
Parkings: 1

Area: 250 m2

Type: House



Theesan Pather
0283157794



Pera Tutua-Nathan
0283157794

\$910,000

Theesan Pather on behalf of Urban Real Estate is proud to present 4 Sylan Street, Marsden Park. A striking single-storey home in an elite high convenience enclave of Marsden Park, just a short stroll from Elara Village and both the most popular schools St Lukes & Northbourne Primary. The property has been constructed by the vendors to be the ideal first home, 3 Spacious bedrooms, An Ample living area with large U Shaped Kitchen with an inclusion level that is generous and suited to any young family or investor wanting to secure an entry level property without having to sacrifice on luxury. My vendors are realistic in their expectation and request expressions of interest from the market to help establish a suitable guide in line with expectations. We look forward to showing you through!. For more info and to organise a private inspection please contact Theesan on 0422 580 577. Property Features:- High ceilings- Downlights throughout- Full ducted AC- Custom Curtains- 20mm ceaser in kitchen- 900mm Gas Cooktop- Walk in Pantry- Upgraded fittings & fixtures- Master + Ensuite & W.I.R. Location Highlight:- West facing home- Short Walk to St Lukes K-12- Short Walk to Elara Village Shopping Centre- 6.3km Costco- 7.8km Schofield Station Disclaimer: All information contained herein is gathered from sources we deem to be reliable. However, we cannot guarantee its accuracy, and interested persons should rely on their own enquiries. Images & Furnishing are for illustrative purposes only and do not represent the final product or finishes. For inclusions refer to the inclusions in the contract of sale. Areas are approximate. All parties are advised to seek full independent legal and professional advice and investigations prior to any action or decision.