

4 Turnberry Crescent, Albany Creek, Qld 4035



House For Sale

Monday, 22 April 2024

4 Turnberry Crescent, Albany Creek, Qld 4035

Bedrooms: 5

Bathrooms: 3

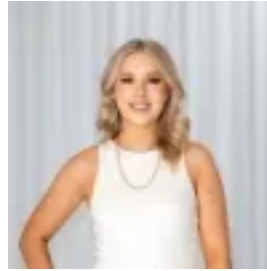
Parkings: 2

Area: 930 m2

Type: House



Jonathan Wein
0732649000



Bianca Reynolds
0732649000

Expressions Of Interest

Nestled on an elevated 930m² in the exclusive Country Club Estate in Albany Creek is 4 Turnberry Crescent. An elegant executive style double storey home offering five bedrooms (or 4 plus study), three contemporary bathrooms and there is absolutely nothing left to do but move in and enjoy the enviable lifestyle that a home of this calibre offers. The light-filled entry of the home will draw you in as you are welcomed by the soaring ceilings, bamboo timber floors, and the abundance of natural light throughout. The generous floor plan of this home offers a layout so spacious that you will love entertaining and having guests visit, as there is plenty of living areas for the whole family to relax and enjoy. A stylish barn-door separates the media/rumpus room from the open plan areas of the living and lounge rooms and the entertainer's kitchen offers a large breakfast bar, European appliances, stone bench tops and a walk-in pantry. You will enjoy hosting family and friends in the covered entertaining area overlooking the pool, while the kids run and play in the fully fenced backyard that has its very own playground. After a long day at work, you can relax in your own spa or cool off in the pool. Conveniently located within walking distance to Albany Hills State School and popular coffee shops, this home is bound to tick all the boxes. Contact Jonathan Wein for more information on 0430 485 430. Features: * Five bedrooms or 4 bedrooms plus study (4 with built-ins), ceiling fans and carpet * Main bedroom with great-sized private deck, large walk-in robe and gorgeous-sized ensuite, with free standing bath, dual vanity, and walk-in shower * Contemporary family bathroom with free standing bath, large walk-in shower, and modern fittings * Large light-filled wide entry * Soaring high ceilings * Spacious and generous sized multiple living areas * Polished floors * Huge entertainer's kitchen with large breakfast bar, European appliances, stone bench tops, walk-in pantry * Split system air conditioning throughout * Two car garage, with epoxy * Spacious galley style laundry with a plethora of storage * Side access * An elevated 930m² of flat land * Large entertaining area overlooking established gardens and pool * Sparkling inground saltwater pool + spa * Kids playground * Council Rates \$646.09 Location: * 550m to City bus stop and private school buses * 350m to Albany Hills catchment school * 550m to basketball, playground and dog park * 1.2km to Woolworths * 2km to Aldi * 7.3km to Westfield Chermerside * 14.1km to City Disclaimer: "Information contained on any marketing material, website or other portal should not be relied upon. You should make your own enquiries and seek your own independent advice with respect to any property advertised or the information about the property." LJ Hooker Albany Creek | Warner also offer a property management service. If you're considering renting your property, are looking to buy or would like a free review of your current portfolio, please call our main office on (07) 3264 9000."