

4 Valepark Close, Noble Park North, Vic 3174

House For Sale

Tuesday, 2 January 2024

buxton

4 Valepark Close, Noble Park North, Vic 3174

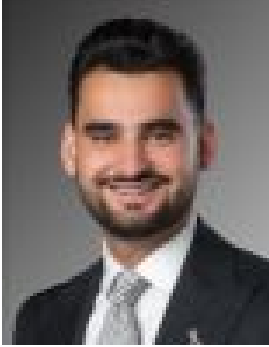
Bedrooms: 3

Bathrooms: 1

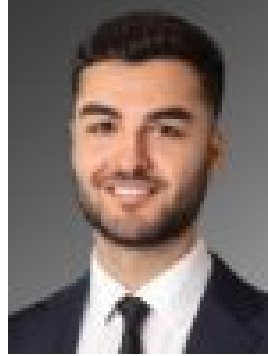
Parkings: 1

Area: 534 m2

Type: House



Ozan Kanbur
0403644379



Emrah Dilbaz
0422054302

\$700,000 - \$750,000

Situated in a tranquil and highly sought-after pocket of Noble Park North, surrounded by various amenities, this charming three-bedroom home offers bright interiors alongside a generous rear yard on a spacious 534m² (approx). This incredible property allows your creativity to soar and make it your own. You can further renovate to add your personal touch, extend, or subdivide due to its wider-than-average frontage (STCA) - imagine the endless possibilities to increase the value of your investment or create your perfect dream family home. Beyond the front fence and classic brick exterior, you are instantly greeted by an ideal floor plan that will undoubtedly cater to various families. Polished timber flooring adds warmth through the spacious front living zone. From here, a relaxed meals area connects to the kitchen, featuring a stovetop, oven and ample storage space with a tiled splashback. Peacefully zoned away, a central family bathroom and WC service the nearby bedrooms, two of which include built-in robes and are all graced with natural light. Outside, you'll discover ample space for loved ones to enjoy, with a spacious covered entertainment area and lush lawn space amidst delightful gardens. Further appointments include a full laundry, ducted heating, split system cooling, shed and a garage with additional car accommodation via the driveway. You'll discover a multitude of amenities just a short distance from your home. Such as great local schools like Silvertown Primary School and Noble Park Secondary, within walking distance to Nazareth Christian College, the Waverley Gardens Shopping Centre, Silvertown Medical Clinic, public transportation, and various recreational facilities. In addition, you'll have easy access to major freeways in just a few minutes, such as the Monash and Eastlink Freeways, Princes Highway and more.