

4 Walmsley Crescent, Silverdale, NSW 2752

Raine&Horne.

Sold House

Friday, 9 February 2024

4 Walmsley Crescent, Silverdale, NSW 2752

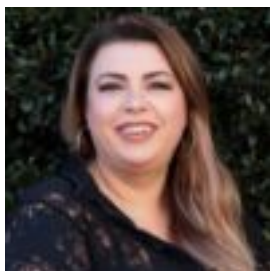
Bedrooms: 4

Bathrooms: 2

Parkings: 2

Area: 701 m2

Type: House



Bianca Rossetto

0247321000

\$1,150,000

Situated in the highly sort after Cascades Estate, this immaculate family home combines fresh contemporary interiors and quality finishes to create a stylish family environment that focuses on privacy and easy indoor/outdoor living. The property features a sophisticated palette for contemporary living and entertaining whilst providing state of the art finishes and quality appliances plus a large safe and secure backyard with a large outdoor entertaining area. Features include:- Open plan kitchen, living and dining- Separate lounge room with plenty of natural light- Designer kitchen with oversized stone benchtop and walk in pantry- Stainless steel appliances and plenty of storage- Large main bedroom with walk-in robe and ensuite- Built-ins to all other bedrooms- Modern and spacious main bathroom with separate bath and shower- Fully fenced yard, low maintenance and side access- Outdoor alfresco area- Double garage with automatic door and internal access- Ducted air conditioning throughout- Internal laundryFor further information please contact Bianca Rossetto on 0423 798 801Disclaimer: The above information has been gathered from sources that we believe are reliable. However, we cannot guarantee the accuracy of this information and nor do we accept responsibility for its accuracy. Any interested parties should rely on their own enquiries and judgement to determine the accuracy of this information for their own purposes.