

40 Cambra Road, Belmont, Vic 3216



House For Sale

Friday, 10 May 2024

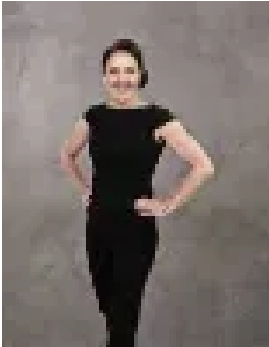
40 Cambra Road, Belmont, Vic 3216

Bedrooms: 3

Bathrooms: 2

Parkings: 1

Type: House



Michelle Winckle
0352411488



Sophie Spowart
0478957905

\$745,000 - \$795,000

Situated on a spacious 561sqm allotment in the heart of Belmont, this modern and light filled residence is sure to tick all your boxes. Perfectly positioned with north-facing rear yard, the perfect starter for a first home buyer, downsizer or savvy investor. Boasting a spacious floorplan, the welcoming entry flows into the lounge, dining, and kitchen area with ample cupboard space, oven, cooktop, and dishwasher. The outdoor deck is the perfect space to entertain all year round. Comprising of 3 large bedrooms, the master includes an expansive ensuite and walk-in robe. The other two bedrooms include built-in robes and are serviced by the central bathroom. With ducted heating, solar panels, a water tank and a side carport, this home is a perfect opportunity in a central location. Within 10 minutes to Geelong CBD, Deakin University, Epworth Hospital and Waurm Ponds Shopping/Entertainment precinct and everything the region has to offer.*All information about the property has been provided to Hayeswinckle by third parties. Hayeswinckle has not verified the information and does not warrant its accuracy or completeness. Parties should make and rely on their own enquiries in relation to this property.