

40 Eyre Street, Mount Gravatt East, Qld 4122

House For Sale

Friday, 14 June 2024

40 Eyre Street, Mount Gravatt East, Qld 4122

Bedrooms: 4

Bathrooms: 2

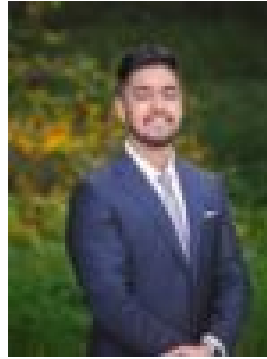
Parkings: 1

Area: 809 m2

Type: House



Tanya Douglas
0434096119



Leslie Ow
0416941141

For Sale

Why you'll love it: Nestled on one of the best streets in Mount Gravatt East, this classic post-war home is an ideal blend of charm and potential. The spacious open-plan lounge room creates a welcoming atmosphere for family gatherings, while the large rumpus room downstairs offers additional space and storage. Set on an elevated block, the property boasts panoramic views and leafy outlooks, providing a serene and picturesque setting. Just a short drive from Westfield Garden City and less than 12km from the CBD, this home offers both convenience and tranquillity. Whether you choose to renovate, rebuild, or develop the expansive block, the 18.3m frontage provides ample opportunity to create your dream home. Enjoy the peace and privacy of this prime location, with all the amenities you need within easy reach.

Key features:-
Classic post-war home with hardwood construction- Spacious open-plan lounge room- Large downstairs rumpus room with storage- Elevated block with panoramic views and leafy outlooks- Located on one of Mount Gravatt East's best streets- Less than 10 minutes to Westfield Garden City- Under 12km to the Brisbane CBD- Expansive 18.3m frontage- Development opportunity to build two new homes- Potential to renovate and personalize

Best suited for: Families seeking a spacious home with potential for renovation or redevelopment. Also perfect for developers looking to capitalize on the prime location and expansive block.