

40 Leichhardt Street, Logan Central, Qld 4114



House For Sale

Wednesday, 15 May 2024

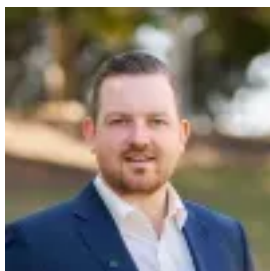
40 Leichhardt Street, Logan Central, Qld 4114

Bedrooms: 3

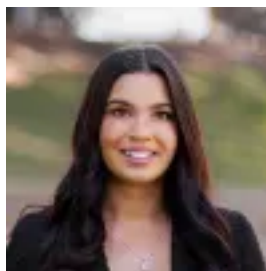
Bathrooms: 1

Area: 890 m2

Type: House



Isaac Turner
0733860011



Zoe Mavromatis
0733860011

Submit Offers

Add your personal touch to this neat and well presented 3 bedroom home perfect for all seasons round! With very little effort you could add significant value to this ideally located property. The owners are committed to selling, and interest from all serious buyers is highly encouraged! On arrival you'll be impressed by this beautiful brick home. You are welcomed through the front door into the large lounge room - this area is great to host family and friends comfortably all year round. A flexible open-plan living/dining area, finished with richly coloured polished timber floors, adding to the warmth of the home, poses the perfect space to relax and unwind, or entertain guests. The spacious modern kitchen is a real treat! Adding a great touch of style to the home. Equipped with 4 burner gas cooktop, double bay sink and a great deal of cabinetry. Each of the bedrooms have been located throughout in a manner which affords everyone to enjoy their own space, and are serviced by a central family bathroom, which offers elegant finishes and quality fixtures. It boasts ample space to comfortably service this level. Behind the home, you'll adore the fully fenced backyard, perfect for the kids and pets to play! Only five minutes from the Pacific, Logan and Gateway Motorways for a short commute to Brisbane or the Gold Coast. This property is also only a three to five minute walk to train and bus stations and local schools. This property is rented by quality tenants paying \$460 until November 2024. Property Features: Large 890sqm block 3 Large bedrooms all with built in robes Spacious modern kitchen Bathroom with separate shower & toilet Internal laundry Garden shed Location: 350m Woodridge State School 750 m Woodridge State High School 3 mins to Logan Central Plaza (Coles, Kmart, Variety of restaurants) 10 mins to Pacific Highway 20 mins to Westfield - Garden City 25 mins to Brisbane CBD 30 mins to Brisbane Domestic/ International Airport 45 mins to Gold Coast