

40 Melaleuca Road, Howard Springs, NT 0835



House For Sale

Friday, 3 November 2023

40 Melaleuca Road, Howard Springs, NT 0835

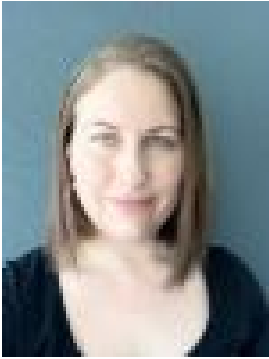
Bedrooms: 5

Bathrooms: 2

Parkings: 2

Area: 2 m2

Type: House



Nuriye Piening
0429826650

\$870,000

You don't often come across a property with a massive resort style pool! Imagine the pool parties you'll have with your friends and family. This pool has it all a sunken bar, waterfall, barstools, and a swim-up bar is a must-see, promising endless summer fun for all ages. Five well-sized bedrooms, including a main bedroom with walk-in robe ensuite, provides ample space for a growing family, while the additional study offers a quiet retreat for work or study. The main bedroom, ensuite, 3 bedrooms and the main bathroom are located in a separate wing to the living/dining, kitchen, bedroom and office/study/playroom. If you enjoy outdoor living this set up is truly impressive, the 11m x 8m expansive outdoor entertaining undercover area is perfect for hosting dinners for family gatherings with an area built in to house your bbq allowing more floor space to enjoy. On those cool nights enjoy a relaxing evening by the fire pit or by the toolmans shed with a bar to hang around. Double undercover carport for covered parking, landscaped gardens, stables and a tack room with an attached one-acre fenced paddock with water. The property backs onto the Pine Forest where you can enjoy it like it's your own back yard. The prime location is just 8 minutes from Howard Springs shops and popular tavern, 13 minutes from Coolalinga and Gateway Shopping Centre, and under 10 minutes from local public and private schools. Embrace the perfect blend of style, space, and tranquillity in this magnificent family home – a haven for modern living and lasting memories. Featuring: - Five bedrooms- Study- Open plan kitchen, dining, lounge- Walk In Pantry- Main bedroom with walk in robe and ensuite- Tiled, fans and aircons throughout- Main bathroom has double shower head with sep bath tub- Breezeway between living areas and bedrooms- 11m x 8m undercover entertainment area- Truly impressive concrete pool with waterfall, sunken bar and swim-up bar- Bore at 2LPS- Fire pit with unique stone seating- Landscaped gardens surrounding the house and pool- Manual reticulation to the garden beds- Shed with workshop and bar area (not plumbed)- Stables and tack room with a one acre of fenced paddock for livestock, water to the yard- Backs onto the Pine Forest with a gate to explore like it's your own back yard- Under 10 minutes to Howard Springs public school, Good Shepherd Lutheran College, Howard Springs shops with post office and local tavern- 12 minutes to Palmerston City Centre- 13 minutes to Coolalinga Shopping centres