

401/130-134 Sydney Street, New Farm, Qld 4005



Sold Apartment

Tuesday, 30 January 2024

401/130-134 Sydney Street, New Farm, Qld 4005

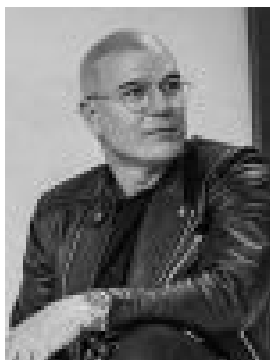
Bedrooms: 4

Bathrooms: 4

Parkings: 2

Area: 269 m²

Type: Apartment



Heath Williams

0731075111

\$4,200,000

Defined by organic forms and graceful curves, this Joe Adsett designed residence boasts seamless integration of indoors and out across a generous 269m² with the heart of New Farm on your doorstep. With a private entrance lobby separating the main entertaining space from the sleeping quarters this floorplan is designed for practical living with luxury finishes. An outdoor room of any entertainer's dreams spans the entire width of the building, capturing the city views and northerly aspect.- Luxury finishes include blackbutt timber floors, Italian travertine-look tiles, Miele appliances and an integrated fridge (plus Vintec wine fridge to kitchen) and butler's pantry- Master suite with walk-in robe, ensuite with city views and balcony access- Additional three ensuited bedrooms off the secondary living space- Two side by side car spaces plus private storage- Onsite amenities include heated pool, spa and gym- 6 level boutique residential low-rise designed for discerning owner-occupiers - Living in one of Brisbane's most desirable locations - stroll to Merthyr Village, The Powerhouse, New Farm markets, Tenerife restaurants and James Street