

405/30-32 Lilydale Grove, Hawthorn East, Vic 3123

Apartment For Sale

Friday, 14 June 2024

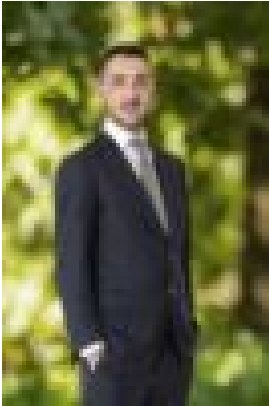
405/30-32 Lilydale Grove, Hawthorn East, Vic 3123

Bedrooms: 1

Bathrooms: 1

Parkings: 1

Type: Apartment



Luca Perruzza
0457588858



Claudio Perruzza

\$330,000 - \$360,000

Well, Hawthorn is brilliant, but it also happens to be the name of this building and no wonder, the 66 boutique apartments are fabulous and so is the location where once out the front door you will find lifestyle delights in whichever direction you choose. Off Burke Road and in behind Burwood Road apartment 405 offers a great space and good living and features a bespoke living zone to a large, covered terrace plus a carpark- not a stacker and storage locker. A fab first home indeed it also serves as a super clever investment with current rent at \$400 per week but given the market and thanks to the gov., expect more in the future with the last 2 lettings in the block being at \$460 per week.