

**407/16-18 Wirra Drive, New Port, SA 5015**



**Sold Apartment**

Saturday, 24 February 2024

407/16-18 Wirra Drive, New Port, SA 5015

**Bedrooms: 2**

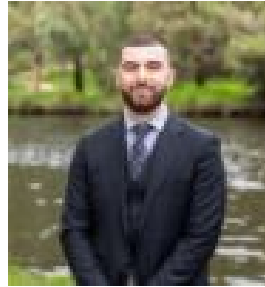
**Bathrooms: 2**

**Parkings: 2**

**Type: Apartment**



Jordan Prole  
0434828333



Gerard Pacillo  
0431596145

## Contact agent

Discover the epitome of modern luxury living at 407/16-18 Wirra Drive, New Port. This relaxed, low maintenance apartment offers a convenient lock up and leave lifestyle. Take daily strolls along the promenade and witness resident dolphins playing nearby. Enjoy proximity to the beach and all the amenities Semaphore and Port Adelaide have to offer

**Apartment Features:-** 2 Bedrooms providing comfortable and private living spaces.- 2 Bathrooms for convenience and privacy- Spacious Balcony offering a perfect outdoor retreat with scenic views.- 2 Ground Floor Parking Spaces with Remote Access for ease, security, and ample parking- Secure Building with Lift ensuring ease of access and added safety.- Health Club with Sauna, Steam Room, Pool, and Spa for your well-being and relaxation

**New Port Area:** Indulge in local delights at Portobello Food Kitchen Bar, a welcoming spot for bites and drinks with friends. The direct train to Adelaide CBD is adjacent, ensuring a quick and hassle-free commute to the city.

This property is also an excellent investment opportunity with amazing tenants paying \$415 PER WEEK until January 2025. For more information please contact Jordan Prole on 0434 828 333

**Disclaimer:** Any prospective purchaser should not rely solely on 3rd party information providers to confirm the details of this property or land and are advised to enquire directly with the agent in order to review the certificate of title and local government details provided with the completed Form 1 vendor statement. All land sizes quoted are an approximation only and at the purchasers discretion to confirm. All information contained herein is gathered from sources we consider to be reliable. However, we cannot guarantee or give any warranty about the information provided. Interested parties must solely rely on their own enquiries. RLA 215339