

408/8 Adelaide Terrace, East Perth, WA 6004

Sold House

Saturday, 17 February 2024



408/8 Adelaide Terrace, East Perth, WA 6004

Bedrooms: 2

Bathrooms: 2

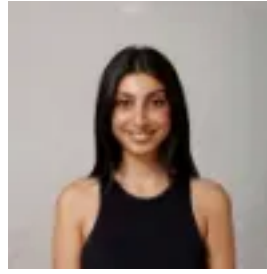
Parkings: 1

Area: 133 m2

Type: House



James Peach
0433464339



Ish Sikka
0401972434

\$630,000

Welcome to 408/8 Adelaide Terrace East Perth! This stunning 2-bedroom, 2-bathroom apartment with rare study room is now available for sale. Currently rented furnished for \$775pw, furniture included in the sale. Located in the heart of the city, this property offers a convenient and luxurious lifestyle. The living and dining room is spacious and inviting, perfect for relaxing or entertaining guests. The kitchen is a chef's dream, with sleek countertops, ample storage space, and high-quality appliances. The bedrooms are well-appointed and offer ample space for relaxation, along with a large study which is perfect for a work-from-home office. The bathrooms are modern and equipped with all the necessary amenities. The property also boasts a large balcony ideal for enjoying the breathtaking city views. The high-rise building ensures privacy and tranquility, whilst allowing you to experience the urban lifestyle at its finest. The building itself is architecturally designed and offers a range of amenities, including a swimming pool. The interior design is stylish and contemporary, with furniture and decor that perfectly complement the space. This property is perfect for those who appreciate modern living in a prime location. The surrounding area offers a range of amenities, including shops, restaurants, and public transport ensuring that everything you need is within reach. Don't miss out on the opportunity to make this your dream home. Contact us today to arrange a viewing and experience the luxury and convenience of 408/8 Adelaide Terrace East Perth. ALL OFFERS PRESENTED ON THURS, 07 MARCH, 4:00PM (Unless Sold Prior)

Residence: 105m² Balcony: 8m² Car Bay: 14m² Storeroom: 5m² Total Area: 133m² Rates & Dimensions:- Council Rates - \$1,832.50 p.a.- Water Rates - C \$1,200 p.a.- Strata Admin - \$1337.51 p/qtr- Strata Reserve - \$159.74 p/qtr Points of Interest (all distance approximate):- Free CAT bus services at your doorstep- 550m to the Swan River- 550m to the WACA Ground- 600m to Langley Park- 800m to Gloucester Park- 800m to the new Perth Girls' School Civic Precinct/Cinema- 900m to Queens Gardens- 1.1km to Wellington Square- 1.8km to Optus Stadium- 2.2km to Elizabeth Quay- 2.3km to Perth CBD and Perth Bus/Train Stations- 2.5km to Claisebrook Train Station- 2.5km to Crown Towers- Highgate Primary School and Bob Hawke College catchment areas- Close to both Mercedes College and Trinity College