

**409/58 Peninsula Drive, Breakfast Point, NSW 2137**



## **Apartment For Rent**

Friday, 12 April 2024

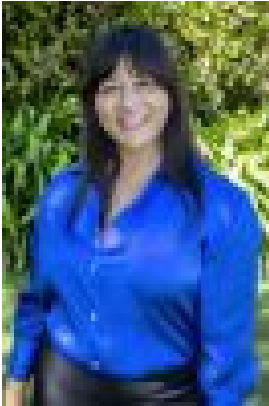
409/58 Peninsula Drive, Breakfast Point, NSW 2137

**Bedrooms: 1**

**Bathrooms: 2**

**Parkings: 1**

**Type: Apartment**



Lena Koprivnjak  
0287658300

**\$720 pw**

Occupying a prime north facing position with views to the water and located within the popular Nantucket building, this split level 1 bedroom apartment features a unique layout that runs the full width of the building allowing dual aspects and cross ventilation. The lounge/dining, balcony and kitchen all enjoy water views and offer total privacy. With the added benefit of a separate WC for guests, this apartment suits those looking for something a little different. Additional Features:- Miele gas kitchen with Caesarstone bench tops- LED down lights- Air conditioning- Foxtel & NBN enabled- Basement car space with storage cage- Membership to the Country Club