

# 41/69 Boulter Road, Berrimah, NT 0828



## Unit For Sale

Thursday, 4 April 2024

41/69 Boulter Road, Berrimah, NT 0828

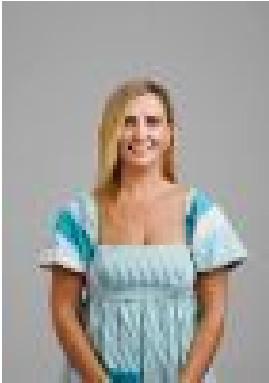
**Bedrooms: 3**

**Bathrooms: 2**

**Parkings: 2**

**Area: 227 m2**

**Type: Unit**



Rebecca Wescombe  
0419825463

**\$415,000**

Location, location, location! This humble abode has you covered, it is ideally located between both Darwin, & Palmerston making the commute a breeze. The home features three generous sized bedrooms all fitted with mirrored built in robes. The master includes its own modern ensuite with floor to ceiling tiles & a frameless shower screen. While the second & third bedrooms are serviced by the extra-large main bathroom that is also fitted with the laundry. An open plan kitchen and living room sits at the centre of the home, with large windows and glass doors to the alfresco area this space is light-filled and airy. The kitchen has a practical design with contemporary finishes, the large island bench features a stone top and is ideal for both food preparation & as a breakfast bar. There is also an abundance of cupboard space. The inside living flows seamlessly to the outside alfresco where you can entertain with ease while being surrounded by your tropical garden. An added feature for this property is the direct access to the central park which includes a playground, BBQ areas & plenty of room for the kids to run around. A huge amount of amenity is within minutes of this location, there are several schools nearby including the prestigious Haileybury Rendall, a childcare, shops & the supermarket. Property features include:- Centrally located to Darwin & Palmerston- Spacious & modern design- Sleek chefs' kitchen, with large island bench & ample cupboard space- Three generous bedrooms all with built in robes. The main also features an ensuite.- Quality floor tiles throughout- Dual purpose main bathroom includes an internal laundry- Large windows for capturing the natural light & breezes- Split system air conditioning throughout - Undercover parking for two vehicles- Tropical yard with lush lawn- Secure & private- Beautiful central park in the complex includes BBQ areas & a playground. Great for the whole family.- Local schools, childcare & shops only minutes away Council Rates: \$1,367 p/a (approx) Body Corporate: \$4,356 p/a (approx) On Title: 227sqm Year Built: 2014 This spacious, modern home is ready to move in to. Book your inspection today!