

41 Toorumbee Drive, Mooloolaba, Qld 4557

Sold Residential Land

Wednesday, 4 October 2023

McGrath

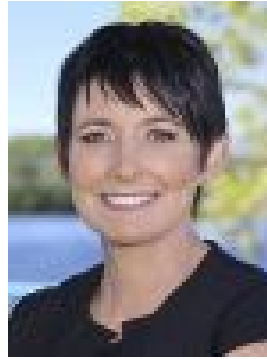
41 Toorumbee Drive, Mooloolaba, Qld 4557

Area: 534 m2

Type: Residential Land



Hamish Bolderston
0754508000



Trudi Fernandez
0417137374

\$870,000

This is a rare opportunity to own prime land in this highly sought-after part of Mooloolaba. With many knockdown rebuilds occurring in the area, this is a chance to save time and money by avoiding the need to demolish an old home before building. The land is close to everything that makes Mooloolaba so popular with locals. One family has owned this particular block since the original subdivision in the area. - 534sqm of prime Mooloolaba land, already cleared and ready to build- Slightly elevated position provides for district outlook to Buderim- Close to the local shops, including the famed Ray Jays fish & chips- Surrounded by other quality homes and many rebuilds underway- Short distance to either Mooloolaba or Alexandra Headland beaches- Close to Mooloolaba restaurants, cafes and thriving wharf precinct- Opportunity to create your Mooloolaba dream home- Mooloolaba Primary School and Mountain Creek High School catchments- 15-20 minutes to the university, hospitals and Sunshine Coast Airport