

**412/13 Verona Drive, Wentworth Point, NSW 2127**



**Apartment For Sale**

Friday, 19 April 2024

412/13 Verona Drive, Wentworth Point, NSW 2127

**Bedrooms: 2**

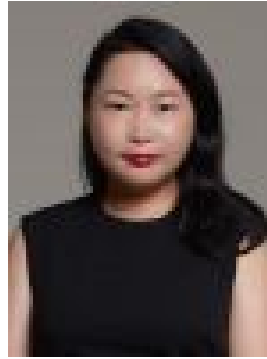
**Bathrooms: 2**

**Parkings: 1**

**Type: Apartment**



Tracy Yi HONG  
0478886675



Elaine Yalin Zhu  
0478886675

## **Spacious 2 bedroom! Affordable!**

Interested in viewing the property or getting a market appraisal? Please welcome to contact Elaine ZHU 0490 659 115 Reward yourself in this refined sanctuary with the colossal balcony for coastal breeze freshness amid the restful Wentworth Point waterside community. Perched at the sensational complex built by the internationally acclaimed community developer - Sekisui House, this refinery presents you with the ideal combo of comfortability and urban lifestyle living with its superb designer craftings of Japanese aesthetics and artistry, as well as the meticulous open-plan features designed to draw the most of connectivity around. Effortlessly welcoming an engaging flow of freshness from the massive balcony into the well-proportioned, sunlit interiors adorned with premium finishes, you'll certainly love to immerse in this resort-style living with minimal maintenance effort. What we love about this apartment:- Massive balcony for a great source of lighting & ventilation- Contemporary living with exquisite finishes throughout- Spacious and well-proportioned living & dining space- Gourmet gas kitchen with prestigious stainless steel appliances- Spacious bedrooms built with wardrobes; fairly distanced for good privacy- Concealed internal laundry & plentiful internal storage- Split system A/C; security intercom system- One allocated car space & storage cage Residents- Exclusive Resort-like Facilities:- Gym- Indoor swimming pool Prime Location in the hub of Wentworth Point:- Marina Square Shopping Centre- Community centre & public library- Variety of dining & shopping options- Free community shuttle to Rhodes- Multiple bus routes directing to inner-west & northern suburbs- Short stroll to Sydney Olympic Park Wharf Outgoings (approx.) Strata: \$1,143.64/ quarterly Council: \$316.2/ quarterly Water: \$342.29/ quarterly