

412/5 Olive York Way, Brunswick West, Vic 3055



Apartment For Rent

Friday, 19 April 2024

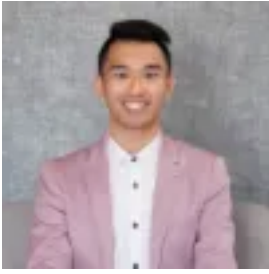
412/5 Olive York Way, Brunswick West, Vic 3055

Bedrooms: 2

Bathrooms: 2

Parkings: 1

Type: Apartment



Kim Te

1300850730

\$590 per week

****Booking an inspection is essential**** Registering your details allows us to keep you informed with instant confirmations, reminders, updates on available inspection times, changes or cancellations for your appointment. Inspections may be cancelled if there are no registered attendees. This two-bedroom apartment positioned in a landmark location of Brunswick West will tick all the boxes. The Grove presents a contemporary and vibrant inner-city lifestyle. This apartment is cleverly designed and elegantly finished. Step inside and you will be greeted by:- Open plan living and dining area extending out to private balcony- Floor-to-ceiling windows to allow for plenty of natural light- Island style kitchen with European appliances, stone benchtops and ample cupboard space- Timber flooring throughout living and kitchen area- Large bedrooms with built-in robes- Modern bathrooms with large fully tiled showers. Other features include car space, split heating and cooling, European laundry and video intercom. The Grove is your perfect urban base with resort style amenities adding a new dimension to apartment living. Facilities include:- Business Hub- Private dining room with a full functional kitchen- Gym, landscaped spa, table tennis and Bocce court- A selection of gardens and BBQ- 52 visitor car spaces- Onsite retail outlets and cafes. Located only 6km north of the Melbourne CBD, The Grove is easily accessible by public transports, some of the city's arterials and moments away from everything you need for your daily life.- 1 minute around the corner from an array of eateries and grocery stores- 3 minutes walk to the nearby lush green Dunstan Reserve and the leafy banks of Moonee Ponds Creek- 5 minutes walk to Melville Road trams and Anstey Train Station providing direct service to the city- Easy access to M2 City Link and University of Melbourne*Please note images are indicative only floorplan and finishes may vary