

**420 Mount Eirene Road, Gembrook, Vic 3783**



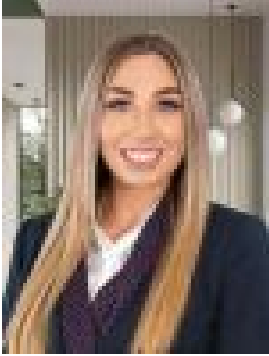
**Residential Land For Sale**

Wednesday, 15 May 2024

420 Mount Eirene Road, Gembrook, Vic 3783

Area: 4 m2

Type: Residential Land



Candice Hill  
0400148081

**\$500,000 - \$550,000**

Discover your own 10-acre haven nestled in pristine native bushland, where towering trees and lush ferns create a symphony of nature with local wildlife. Just moments away from the charming township of Gembrook, this idyllic retreat offers affordable tranquillity, beckoning you to embark on a new chapter of serenity. Situated meters from Gembrook Road, this gently sloping parcel of land boasts Diamond Creek running along its rear boundary, with the convenience of an all-weather driveway already in place. Mains water and power are currently connected on the property, enhancing its appeal for habitation or development. A residence stands on the grounds, awaiting your vision for restoration or providing a blank canvas for your dream home. Opportunities like this are rare, so seize the chance to make this slice of paradise your own. Don't delay; your tranquil escape awaits!