

4204/45 Clarke Street, Southbank, Vic 3006



Apartment For Rent

Friday, 19 April 2024

4204/45 Clarke Street, Southbank, Vic 3006

Bedrooms: 2

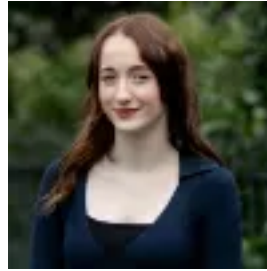
Bathrooms: 2

Parkings: 1

Type: Apartment



Rhys Brown
0381020200



Emma Smith
0381020200

\$775 per week

UNFURNISHED: With breathtaking uninterrupted 45th-floor views which include Port Phillip Bay, Albert Park Lake, Royal Botanic Gardens, and the mountain ranges to the east, this bright, ultra-modern, and high end 2-bedroom, 2-bathroom apartment is one of the jewels in the residential crown of Platinum Tower. • Love the light and modern style of this 2 BR Platinum Tower apartment. • Enjoy views of bay, Albert Park Lake, Botanic Gardens, and mountains. • Amazing light and views through the relaxed living and meals zone. • Balcony off living area is another great place to enjoy the views. • Stylish stone kitchen includes premium stainless steel appliances. • Master bedroom features walk-in robe storage and an ensuite. • Access to pool, gym, spa, steam room, Sky Lounge, BBQ, and concierge. • Near Crown Casino, Clarendon Street shops, and transport. Designed for those who appreciate low-maintenance living, and with access to stunning resort-style facilities as part of this exclusive building, this apartment ticks all the right boxes. Exceptional natural light fills the living and meals zone, with this area incorporating the stylish stone kitchen which features premium stainless steel appliances. The living zone, and the balcony which is easily accessed off the main area, are the best places to soak in the memorable views. A master bedroom has access to a walk-in robe as well as a chic ensuite, with the 2nd bedroom coming with built-in robe storage. Further embrace a beautiful bathroom with oversized shower, laundry facilities, reverse cycle heating and cooling, secure intercom, and secure car space. As part of Platinum Tower, you have access to one of largest vertical gardens in the world as well as one of the highest indoor swimming pools in Melbourne. Also enjoy a gym, spa, steam room, Sky Lounge, BBQ area, and building concierge. You also have a Metro supermarket on the ground floor. Moments to the iconic Crown Casino with world class entertainment and restaurants, Boyd Community Hub, Clarendon Street shops and restaurants, South Melbourne Market, South Wharf Promenade, amazing CBD attractions, buses, trams, and Southern Cross Station.