

**427 Parkview Crescent, Lavington, NSW 2641**



**Sold House**

Thursday, 7 March 2024

427 Parkview Crescent, Lavington, NSW 2641

**Bedrooms: 3**

**Bathrooms: 1**

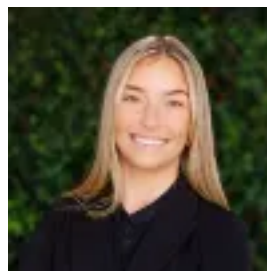
**Parkings: 2**

**Area: 664 m2**

**Type: House**



Andrea Lever



Tessa Duryea  
0260886400

**\$525,000**

Discover the epitome of sophisticated living at 427 Parkview Crescent, Lavington - a stunningly renovated brick home that redefines modern elegance. Nestled on a generous 664 sqm block, this property is a harmonious blend of luxury and comfort. Step inside to find a beautifully updated interior, where brand new floor coverings and window furnishings meet contemporary design. The heart of this home is its spacious, split-level living room, seamlessly flowing into a state-of-the-art kitchen. Here, culinary dreams come alive with a 900mm gas cooktop, electric oven, exquisite stone benchtops, and abundant storage including a pantry. The kitchen's open plan extends to a dining area, complete with a European laundry, ensuring both functionality and style. Accommodation comprises three well-appointed bedrooms, each featuring built-in wardrobes and ceiling fans for ultimate comfort. The updated bathroom is a haven of relaxation, boasting a free-standing bathtub, sleek vanity, and a separate shower, with the convenience of a separately appointed toilet. Experience year-round comfort with ducted floor heating and evaporative cooling throughout the home. Step outside to an entertainer's paradise: an undercover alfresco area perfect for gatherings, and a decked verandah where you can unwind and enjoy serene views. The property also includes a garden shed within a secure yard, a double car garage, and a charming fire pit area, adding to its allure. Located in a coveted area, this home is within walking distance to a park and a short drive to freeway access, Lavington Square, local shops, and Hume Public School. Albury's vibrant center is just a 10 minute drive away, making this location as convenient as it is desirable. 427 Parkview Crescent is not just a house; it's a lifestyle. A place where sophistication meets comfort, where every detail has been thoughtfully considered to create a home that is truly a cut above the rest. Don't miss the opportunity to make it yours. For the savvy investor expect to accept \$550 per week. Disclaimer: All information regarding this property is from sources we believe to be accurate, however, we cannot guarantee its accuracy. Interested persons should make and rely on their own enquiries in relation to inclusions, figures, measurements, dimensions, layout, furniture and descriptions.