

42A Belmore Street, North Parramatta, NSW 2151



Townhouse For Sale

Tuesday, 14 May 2024

42A Belmore Street, North Parramatta, NSW 2151

Bedrooms: 3

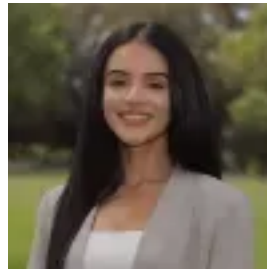
Bathrooms: 3

Parkings: 1

Type: Townhouse



Steven Fan
0298913333



Nilufar ToraySafi
0478813567

Auction | On-Site, Saturday 8th June at 2pm

Superbly positioned in one of the most sought-after streets, within easy access to Parramatta CBD, transport and recreational facilities, this oversized 3-bedroom townhome showcases a generously proportioned layout over 3 levels, with approximately 264m² on the title. This exceptional offering features front and rear landscaped gardens, upstairs balcony with Parramatta City skyline views, multiple living areas and lock-up garage with internal access. Conveniently located within a short stroll to railway station, RiverCat ferry, bus interchange hub, Light Rail & Sydney Metro (under construction), Westfield Shoppingtown, parks, reputable schools, trendy restaurants, cafes, vibrant city night life, Coles supermarket, CommBank Stadium and nearby one of the largest urban renewal projects in Australia - Parramatta Square, a World-Class Civic Centre. It features:- Approx. 146m² ground floor, 69m² first floor, 27m² loft floor for master bedroom & 22m² lock-up garage, for a total of 264m²- Separate formal lounge & dining on ground level plus family/rumpus on 1st floor- Stunning kitchen with 4 burner gas cooktop, sparkling 40mm Caesarstone benchtops, splash backs, ducted range hood, pantry & dishwasher- 3 fully-tiled bathrooms, one on each level with stone vanity countertops, frameless shower screens & rainwater showerheads- Loft-style master bedroom with Ensuite & mirrored built-in robe - Mirrored built-in robe to 2nd & 3rd bedrooms- Undercover balcony on 1st floor with Parramatta City skyline views- Private North-facing backyard with alfresco patio & outdoor gas kitchen- Ducted air conditioning, video security & alarm system - Rainwater tanks & instantaneous gas hot water system- 600 x 600 tiles downstairs & solid timber floors upstairs- Basement auto-door lock-up garage with internal access- Low strata levy approx \$617 per quarter"Ray White Parramatta Group - Parramatta | Oatlands | Northmead | Greystanes, its directors, employees and related entities believe that the information contained herein is gathered from sources we deem to be reliable. However, no representation or warranties of any nature whatsoever are given, intended or implied. Any interested parties should rely on their own inquiries."