

**42B Illuka Crescent, Mount Waverley, Vic 3149**



**House For Sale**

Saturday, 3 February 2024

42B Illuka Crescent, Mount Waverley, Vic 3149

**Bedrooms: 5**

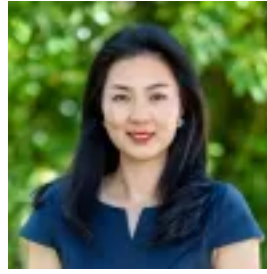
**Bathrooms: 3**

**Parkings: 6**

**Type: House**



Wilson Shi  
0398898800



Ripple Wu  
0398898800

**\$2,500,000 - \$2,700,000**

Master-crafted with a flourish of architectural finesse, this five bedroom, three bathroom residence is a triumph in tri-level luxury. Spoil your guests by selecting a wine from the 1000-bottle cellar and then share it while relaxing by the open fireplace, plumbed BBQ and TV in the under-cover alfresco. Extensive double glazing and sleek polished concrete floors establish a minimalist backdrop, adding to the impact of the expansive dimensions. After working in the study, enjoy inspiring conversation in the living room while the children play upstairs in the retreat. Tailored to entertain on any scale, the open-plan dining and family room sits open with the epicurean kitchen featuring a large stone island, butler's pantry and Smeg appliances including an induction cooktop, pyrolytic oven and a steam oven. With bedrooms on all levels, accommodate your friends in the ground floor guest bedroom with walk-in robe and fully-tiled ensuite. A balcony accompanies the master bedroom with walk-in robe and dual-vanity ensuite. Metres from Pinewood Primary School, the preschool, Pinewood Reserve and Pinewood Shopping Village, there's preferred zoning for Glen Waverley Secondary College. Close to Wesley College, Monash University and the freeway- 6-car basement garage - 1000-bottle temperature-controlled wine cellar- Two powder rooms- Large laundry with chute- Insulated in slab hydronic heating with NEST thermostat controller- Heated towel rails- Refrigerated cooling throughout- High end uPVC European double-glazed tilt and turn windows throughout- Solar hot water with instantaneous gas hot water back up- ZIP tap includes instant boiling water, sparkling water and filtered fresh water- Ducted vacuum throughout- 5.8kw solar power panel system- Central media command centre with built in CAT6 extenders to each level for strong internet connection throughout entire house- 2500 litre water tank for grey water