

**43-53 Branch Creek Road, Clear Mountain, Qld 4500**



**Sold House**

Friday, 20 October 2023

43-53 Branch Creek Road, Clear Mountain, Qld 4500

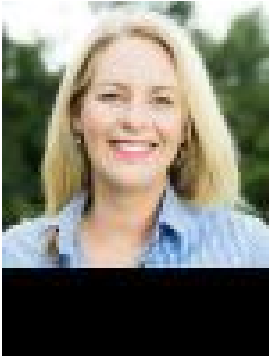
**Bedrooms: 4**

**Bathrooms: 2**

**Parkings: 2**

**Area: 20 m2**

**Type: House**



Ronni Grevell

**\$1,790,000**

Offering stunning views, tranquility and privacy, this spacious family residence is on a spectacular 50 acres of land bordering pristine Cedar Creek – the perfect blend of cleared usable land for livestock and a bushland haven offering an enviable lifestyle for families that want to enjoy the best of country living. Styled with a neutral country palette and modern finishes with high ceilings throughout, the home has a welcoming country kitchen with huge walk-in pantry, stone benchtops with breakfast bar and gas cooktop. Open-plan kitchen, living and dining rooms spill out onto the covered outdoor entertaining area; ideally positioned to capture cool mountain breezes and stunning city and country views. The spacious lounge room features a wood burning fireplace perfect for cosy winter evenings, while the separate media room (potential bed 5) ensures there is space to accommodate the whole family. Wake up to private country views from the main bedroom and enjoy direct access out to the rear courtyard. With a large walk-in robe and luxurious ensuite featuring double vanity with stone benchtops and shower this is a relaxing parents retreat! The three additional bedrooms all feature built in robes with bedroom two also enjoying access to the rear courtyard. The home office/study is situated at the front entrance, perfect for those wishing to work from home. Clear Mountain offers the best of country living and city convenience; with the rolling acres of this city-fringe sanctuary giving your family the space and freedom to create an adventurous country lifestyle. Enjoy uninterrupted access to pristine Cedar Creek and discover your own magical swimming holes. The land is ideal for spending your days with horses & livestock or mountain biking; and all the experiences that make growing up in the country so magical. Contact Ronni and Jim Grevell of Craig Doyle Samford for your opportunity to explore this wonderful property. The finer details: • 50 acres bordering Cedar Creek – so close to the city! • Low set brick GJ Gardner home built in 2010 • Huge master suite with mountain views & luxury ensuite • Modern kitchen with stone benchtops, walk-in pantry and gas cooktop • Abundant indoor / outdoor living & dining areas • Cosy wood burning fire place in lounge; plus, separate media room & home office • 3 bay open machinery shed in paddock + garden shed & greenhouse near house • Fenced on 3 sides with Cedar Creek forming the Southern Boundary • Ideal land for horses, livestock, motorbikes, mountain bikes – your choice! • Majestic mature trees and rolling acres \*\* Virtual Furniture has been utilised throughout this Marketing Campaign Disclaimer: Whilst every effort has been made to ensure the accuracy of these particulars, no warranty is given by the vendor or the agent as to their accuracy. Interested parties should not rely on these particulars as representations of fact but must instead satisfy themselves by inspection or otherwise.