

43 Lomandra Avenue, Kalaru, NSW 2550



House For Sale

Wednesday, 12 June 2024

43 Lomandra Avenue, Kalaru, NSW 2550

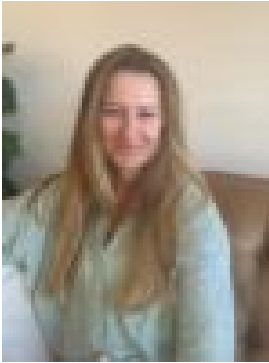
Bedrooms: 4

Bathrooms: 2

Parkings: 5

Area: 1180 m2

Type: House



Natalie Scott

0264944500

\$1,250,000

Experience coastal living at its finest in this near-new, modern home, just a short 10-minute drive from Tathra Beach. Set against a picturesque bush backdrop, this single-level residence epitomizes modern living with its spacious layout, sleek finishes, and thoughtful contemporary design. The interior showcases a lovely neutral colour palette with stylish finishes and an open-plan layout that seamlessly flows to the impressive outdoor entertaining space, perfect for gatherings or peaceful relaxation. The kitchen is a chef's dream, equipped with premium appliances and a large island bench. With four bedrooms, including lavish master suite, there's plenty of space for the whole family. Outside, the landscaped gardens provide a serene oasis, perfect for entertaining and family play. Additionally, a separate shed offers ample storage or workshop space. This is a rare opportunity to own a home where you enjoy a coastal lifestyle combining luxury, functionality, and timeless appeal.

- Generous 1,180m² parcel of level land
- Meticulously built by well renowned local builders
- Home is less than 2 years old
- Lovely bush backdrop with stunning landscaped gardens and welcoming fireplace
- Four spacious bedrooms with built in robes and ceiling fans in all bedrooms
- Stunning main bedroom with generous walk-in robe and elegant ensuite
- Double garage with internal access
- 2nd living room + full laundry with an abundance of storage
- Beautiful kitchen with impressive walk-in pantry
- Impressive undercover outdoor area for year-round entertaining and play
- Separate large shed in backyard with vehicle access
- Extra features such as slow combustion heater plus air conditioning
- Town water plus the bonus of a 25,000 litre rainwater tank
- The perfect family home with nothing to do but simply move in, relax and enjoy
- Great location, only a short stroll to lake for fishing, boating and swimming
- Only 10 minutes to Bega and Tathra and 20 minutes to Merimbula
- Stunning National Parks, secluded beaches and lagoons close by