

43 Mclean Drive, Horsham, Vic 3400



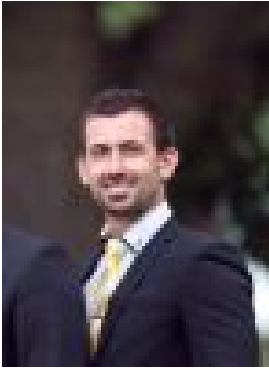
Residential Land For Sale

Wednesday, 17 April 2024

43 Mclean Drive, Horsham, Vic 3400

Area: 600 m2

Type: Residential Land



Andrew Seers

0353822422

\$210,000

Located in Popular Southbank and with uninterrupted views of the wetland is this 600m² allotment ready to be built on. Boasting a 15.63m frontage and unrestricted by easements this allotment is perfectly suited to the construction of high-end townhouses or homes with all usual services including electricity, sewerage, water, gas and nbn optic fibre available for connection. For more information or to discuss this property further, call today!