

43 Petaltail Street, Chisholm, NSW 2322

Sold Residential Land

Wednesday, 17 April 2024

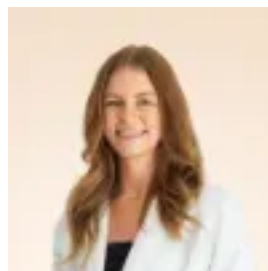
43 Petaltail Street, Chisholm, NSW 2322

Area: 578 m2

Type: Residential Land



Jade Perryman
0240043200



Carly Metcalfe
0466076553

\$500,000

Outgoings: Council Rates: \$2,104 approx. per annum ***Health & Safety Measures are in Place for Open Homes & All Private Inspections
Disclaimer: All information contained herein is gathered from sources we deem reliable. However, we cannot guarantee its accuracy and act as a messenger only in passing on the details. Interested parties should rely on their own enquiries. Some of our properties are marketed from time to time without price guide at the vendors request. This website may have filtered the property into a price bracket for website functionality purposes. Any personal information given to us during the course of the campaign will be kept on our database for follow up and to market other services and opportunities unless instructed in writing.