

**43 Rush Lily Drive, Officer, Vic 3809**



**House For Sale**

Wednesday, 10 April 2024

43 Rush Lily Drive, Officer, Vic 3809

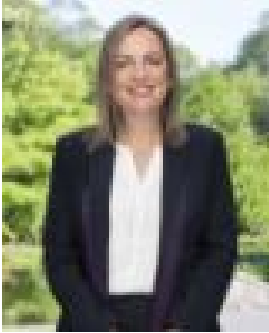
**Bedrooms: 4**

**Bathrooms: 2**

**Parkings: 2**

**Area: 404 m2**

**Type: House**



Nicola Parreira  
0387946100

**\$800,000 - \$880,000**

Discover your new haven in the heart of the vibrant Arena Estate at Officer. This property defines the essence of modern living in a prime location, located directly across from the wetlands, offering a world of convenience right at your doorstep. Step into a lifestyle where every amenity you desire is just a stone's throw away. Embrace the ultimate convenience with shops, medical facilities, delectable eateries, scenic walking tracks, and beautiful parks all within reach. Plus, enjoy a mere few minutes' walk to the train station for easy commuting. Situated in the highly sought after Arena Estate, this home exudes excellence. It features four spacious bedrooms all with brand new carpet, including a luxurious master suite with a walk-in robe and ensuite. Bedrooms 2, 3 & 4 come equipped with built-in robes, complemented by an additional roomy bathroom. There's even a convenient powder room on the ground level. Offering not one, not two, but three distinct living zones, each thoughtfully designed to cater to various aspects of modern life, creating a dynamic living experience, ensuring that your home is not just a place to reside but a canvas for your lifestyle. Whether you're seeking relaxation, productivity, or social gatherings, this residence has you covered, offering the flexibility and comfort you desire. The kitchen is a culinary masterpiece, featuring ample storage, sleek stone countertops, dishwasher, electric oven, and a gas cooker. It seamlessly connects with the open-plan dining area, which, in turn, leads to an outdoor area. Additional perks of this home include a double remote garage with internal access, a separate laundry, and smart under-stair storage. Ducted heating and Evaporative cooling provide year-round comfort in a modern and energy-efficient manner. Perfectly situated directly opposite the wetlands, a picturesque walking track, and in close proximity to zoned primary and secondary schools, Arena shopping centre, and easy M1 access, this property offers you every reason to make it your new home. Don't miss out on the exceptional value it offers.