

43 Wildflower Street, Schofields, NSW 2762

Sold House

Monday, 14 August 2023

43 Wildflower Street, Schofields, NSW 2762

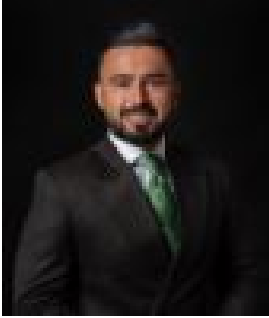
Bedrooms: 4

Bathrooms: 2

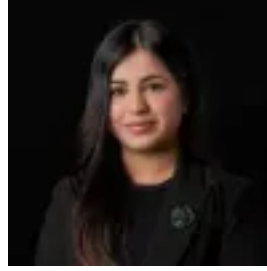
Parkings: 1

Area: 364 m2

Type: House



Amit Kumar
0288964336



Siya Sachdeva
0288964336

\$1,205,000

Offering a great sense of style plus affordability, this well-maintained Rawson home on a 365 sqm (approx) block, is an ideal home for growing families. It is thoughtfully designed home and is set in one of the most desirable locations in Schofields, located within a short walking distance to the premium Galungara Public School, local parks, Schofields Train Station, Shopping centre, and Tallawong Metro Station. Built by the award-winning Rawson Homes, this home presents with an amazing and dynamic layout with the best of open-plan living. The Kitchen living and dining area is super spacious and flows seamlessly to the undercover alfresco and grassed backyard through sliding doors. This home offers four well-proportioned bedrooms, all with convenient built-in robes and the master retreat features an ensuite with a double vanity. The open-plan kitchen/dining/living area is bright and cheerful, flowing seamlessly through sliding doors onto an alfresco undercover entertaining and decking area that borders the low maintenance, fully fenced, secure garden, perfect for the children to play in. The kitchen boasts a wraparound breakfast bar, quality appliances, a gas cooktop as well as an abundance of storage space. Other features you are sure to love about the home:- New timber flooring installed - Freshly painted home- LED downlights installed- Decking in the backyard with an extra pergola- Ducted air-conditioning throughout- Remote-controlled, single lock-up garage with internal access- Low maintenance and child-friendly level backyard - Natural light throughout the home - 365 sqm land size - Builder: Rawson Homes

Location Highlights: Location Highlights:- 5-minute walk to premium Galungara Public School- 1-minute walk to the park on Farmland Drive- 10-15-minute walk to Schofields Train Station and Schofields Village shopping centre - 5-minute drive to Tallawong Metro Station- Short walk to multiple childcare centres on Alex Avenue Enjoy the lifestyle of living just moments away from local parks, premium schools, Schofields Train Station, Shopping centre and amenities. With a reasonable commute to the CBD, this home is on the high side of the street in an exciting, growing area. Disclaimer: This information is provided for general information purposes only and is based on information provided by the Seller and may be subject to change. Interested parties should place no reliance on it and should make their independent inquiries.