

43B Quick Road, Mitchell Park, SA 5043



Sold House

Monday, 9 October 2023

43B Quick Road, Mitchell Park, SA 5043

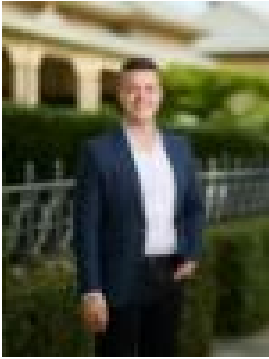
Bedrooms: 2

Bathrooms: 2

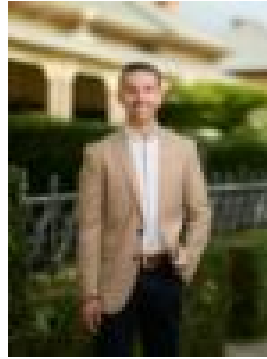
Parkings: 1

Area: 216 m²

Type: House



Cameron Bowes



Blake Willemer
0481533863

\$656,000

Please contact Cameron Bowes or Blake Willemer to discuss a viewing time. Here is a home sure to impress. This modern architecturally designed residence is located in a very sought after suburb and is situated close to all the essentials. The home features two large bedrooms, both with built in robes. The premier suite features an ensuite, just one of the many luxuries you will find. The main bathroom is large and also features floor to ceiling tiles. The kitchen is very spacious and features stainless steel appliances, stone bench tops and an expansive breakfast bar. Added space is provided for a study area at the front of your new home, offering flexible living options. Enjoy the security and comfort with your lock up garage with convenient internal access. Entertain your friends and family in the bright open plan living area which opens out to a shaded alfresco area, complete with a low maintenance, easy care garden. Perfectly positioned opposite Mitchell Park Reserve, you'll love relaxing with a game of tennis or kick the footy. Easy access to the electric rail station or a bus for a quick commute to the city, plus excellent shopping at nearby Westfield Marion with cinema's, cafes and expanding shopping. Only minutes to Flinders Medical Centre or Flinders University, everything you would want is close at hand. Be sure to place your offer today! Disclaimer: Every care has been taken to verify the correctness of all details used in this advertisement. However, no warranty or representation is given or made as to the correctness of information supplied and neither the owners nor their agent can accept responsibility for errors or omissions. RLA: 327058