

# 44 Elmwood Circuit, Wodonga, Vic 3690



## House For Sale

Tuesday, 23 April 2024

44 Elmwood Circuit, Wodonga, Vic 3690

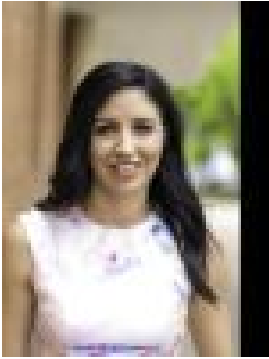
Bedrooms: 3

Bathrooms: 2

Parkings: 2

Area: 234 m2

Type: House



Lucinda Morgan

**\$990,000**

Built in 2017, this stunning, double-story townhouse oozes luxury. 3 generous-sized bedrooms all with ceiling fans, master bedroom with walk-in robe and ensuite plus a private courtyard, large built-in robes in other bedrooms, 3 large living areas with split system heating and cooling (one upstairs and one downstairs), study nook with built-in desk and shelving, gorgeous chef's kitchen with Smeg 110cm dual fuel freestanding cooker, dishwasher and walk-in pantry, beautiful engineered timber flooring in the ground level living areas, double lock up garage with remote and internal access into the home. Plus the added benefit of solar power to minimise electricity costs. The huge living area upstairs has French doors to the balcony and entertaining area complete with built-in gas BBQ. Other features include - \* gas boosted solar hot water\* double glazing throughout \* easy to maintain garden with irrigation system\* 8 star energy efficiency rating.44 Elmwood is located in the heart of the Elmwood development in Wodonga. Elmwood is one of the most liveable and luxury property developments, bringing together the key elements of urban design for an exceptional living experience. Inspired by classic Australian architecture, Elmwood embodies a timeless elegance and offers a rich urban life in a fresh country setting. Elmwood is just 3.5 hours drive away from Melbourne and a pleasant day trip to the Snowy Mountains. It is ideally located in proximity to the Victorian High Country, nearby wineries, glittering lakes, cultural delights and countryside gems.